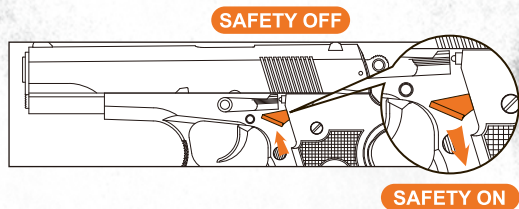


FOR PRIMARY AIRSOFT SPRING GUN SERIES

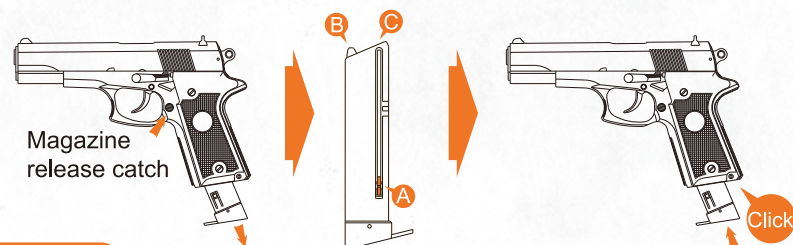
1. OPERATING THE TRIGGER SAFETY DEVICE:

- ★ Please refer to right side photo for safety switch operation.
- ★ Make sure to hear the click when switching safety on and off to ensure the safety is in proper position.



2. LOADING BB: Please use **KWC** granted 6mm BB with this airsoft.

- ★ Press magazine release catch to remove magazine.



CAUTION

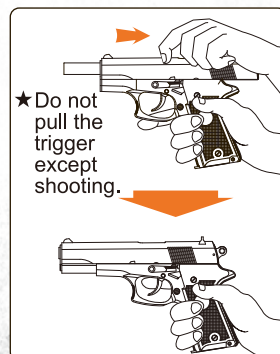
- A. As our design effort to produce the most accurate airsoft, we utilize precision aluminum or copper inner barrel.
- B. Only use high quality KWC bbs to ensure safe and trouble free operation. The manufacture and its distribution will not be held liable for any incidental or consequential damages or injuries caused by users using incorrect / improper bbs.

- A. Pull the magazine follower down and lock it in place by pushing the follower knob over the stopper.
- B. Press the bb catch lever down and hold it down to load bb.
- C. Load BB into the magazine. Forcing extra BB into the magazine could damage the follower and the airsoft.

- ★ Firmly re-insert the loaded magazine back into the grip. You will hear a "Click" indicating the magazine is securely locked in place.

3. COCKING AND SHOOTING:

- A. Switch safety off.
- B. Pull the slide back until you hear a "Click" indicating the shot is locked and ready.
- C. Make sure that the slide has returned backed to its original position before pulling the trigger. (pulling the trigger before the slide is properly seated will cause internal damage to the air soft gun).
- D. Pull the trigger to shoot.
- E. Repeat step B for next shot.
- F. At the end of use, switch the safety on and remove the magazine.



- ★ Do not pull the trigger except shooting.

CAUTION when you have finished shooting

- A. Remove the magazine. Cock and shoot the airsoft again at a safe direction 2 to 3 times to ensure no BB is left in barrel.
- B. Store the airsoft with magazine removed and safety on. Keep it out of reach of children.
- C. Keeping the gun cocked for a long period of time will weaken the piston spring which could cause malfunction.
- D. Please avoid dry firing, for it could cause parts deformed or damage.

WARNING READ THIS OWNER'S MANUAL COMPLETELY.

This airsoft is intended for recreational or training purposes. To prevent improper handling, modification or alteration causing malfunction or accident, please read the owner's manual carefully. Enjoy the pleasant shooting experience by proper operation.

1. Do not put your finger on the trigger except shooting.
2. Please choose safe and proper target.
3. Please always keep the airsoft on safe and unloaded when not using.
4. Like all mechanical devices, an airsoft safety can fail. Always handle the airsoft safely even when the safety is "on safe". Never point the airsoft at any people.
5. Avoid ricochet. Never shoot at a hard or flat surface or at water.
6. Keep the airsoft out of reach for small children.
7. Your backstop should be inspected for wear before and after each use. Discontinue use of the backstop if surface shows signs of failure or ricochet.
8. Only use high quality BB. Never use ①BB diameter larger than 6mm ②BB with unsmoothed surface ③ reused BB that has been fired ④incorrect projectiles not design for this airsoft.
9. Check any gun that has been dropped to ensure that its function has not been affected.

- ★ Always wear eye protection when using airsoft.



- ★ Read the owner's manual before using the airsoft.



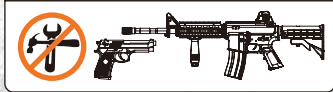
- ★ Never brandish or aiming this airsoft at any people or domestic animals. Brandish this airsoft in public is dangerous and may be a crime.



- ★ Always be aware of your surrounding before and during shooting and select a safe area for target practice.



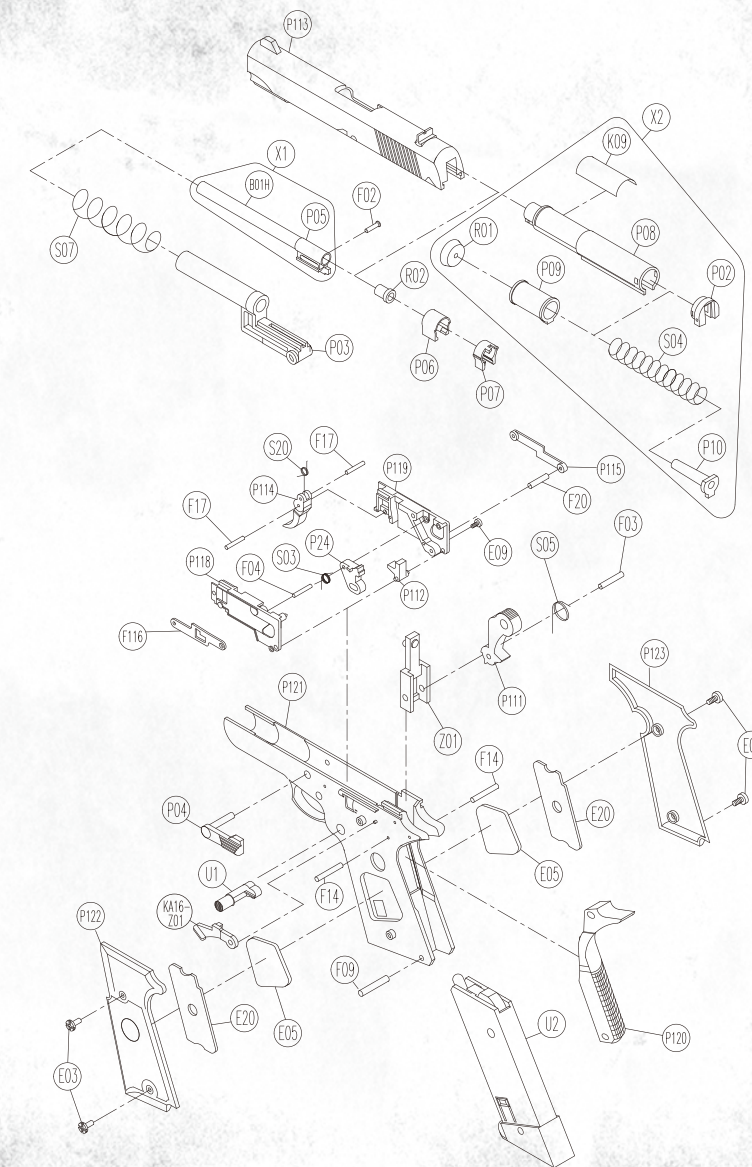
- ★ Disassemble, modify, or alter of your airsoft may cause malfunction, void your warranty and may make it unsafe to use.



AAKACZ16 SERIES PARTS LIST

NO.	UNIT	NO.	UNIT
P02	CYLINDER REAR COVER	B01H	INNER BARREL
P03	OUTER BARREL		
P04	SAFETY LEVER	F02	PIN (CYLINDER)
P05	BARREL CONNECTOR	F03	PIN (HAMMER)
P06	CYLINDER CATCH	F04	PIN(CHASSIS)
P07	CONNECTOR CATCH	F09	GRIP GUIDE PIN
P08	CYLINDER	F14	PIN (REAR GRIP)
P09	PISTON	F17	PIN (TRIGGER)
P10	SPRING STOCK	F20	PIN (TRIGGER BAR)
P24	PISTON CATCH	F116	TRIGGER BAR (L)
P111	HAMMER		
P112	HAMMER LINKAGE	S03	PISTON CATCH SPRING
P113	SLIDE	S04	PISTON SPRING
P114	TRIGGER	S05	HAMMER SPRING
P115	TRIGGER BAR (R)	S07	OUTER BARREL SPRING
P118	CHASSIS (L)	S20	TRIGGER SPRING
P119	CHASSIS (R)		
P120	REAR GRIP	E03	SCREW 3.0X6
P121	FRAME	E05	LOWER WEIGHT
P122	GRIP (L)	E09	SCREW 2.3X12
P123	GRIP (R)	E20	GRIP WEIGHT
		K09	PISTON COVER STICKER
Z01	PISTON BASE		
KA16-Z01	SAFETY PLATE	U1	MAGAZINE CATCH UNIT
		U2	MAGAZINE UNIT
R01	PISTON PACKING	X1	INNER BARREL UNIT
R02	RUBBER CHAMBER	X2	CYLINDER UNIT

AAKACZ16 系列零件分解圖 AAKACZ16 SERIES EXPLORED VIEW



※零件有時為了改良而不經預告變更。
Spare parts may be modified for quality improvement
And such modification may be without advance notice.

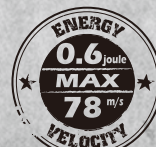
EAGLE 1911

型號
AAKACZ160
AAKACZ162
系列操作說明書

MODEL AAKACZ160 OR AAKACZ162
INSTRUCTION MANUAL



PISTOL



KWC® KIEN WELL TOY INDUSTRIAL CO., LTD
www.kwcgun.com

台南市仁德區義林路168巷89號
NO.89, LN. 168, YILIN RD., RENDE DIST., TAINAN CITY 71752, TAIWAN (R.O.C.)
TEL : +886-6-2798175 FAX : +886-6-2798176
sales@kwcgun.com www.kwcgun.com

低動能遊戲用槍AAKACZ16系列

1.安全裝置：保險作用為防止誤扣扳機時而不至於擊發

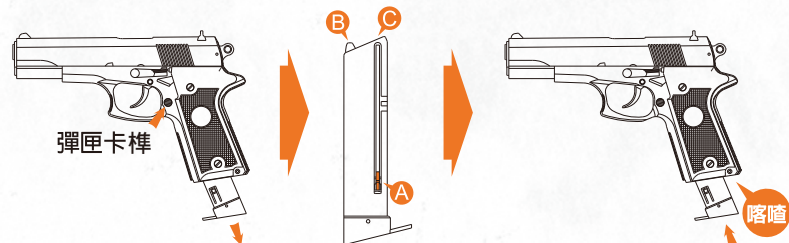
- ★請參考右邊圖片，為本型號保險開關使用方法。
- ★請務必聽到切換時保險開關的聲音，以確定保險是處於安全而正確的位置。



保險開啓，不可擊發

2.裝彈方法：請使用 KWC® 指定的BB彈

- ★壓下彈匣卡榫後便可抽出彈匣



▲注意

- 本公司為了提高此空氣槍的命中率起見，槍身採用非常精密的槍管。
- 請勿使用非本公司指定及品質粗糙的BB彈射擊。因為這些都是造成卡彈及其他種類故障的原因，請注意若強行使用而導致故障發生時，本公司將不負責一切的修理。

- 將滑粒壓到底端並使其固定住。
 - 壓下子彈卡榫，以便裝填子彈。
 - 將BB彈裝入(最多12發)。
- ★將彈匣插入，直到聽到”喀嗒”聲響後才停止。

3.射擊操作：

- 將保險推到”射擊時”狀態。
- 將上蓋往後拉到底，聽到”喀嗒”聲響。
- 確認上蓋是否確實彈回原位。(若上蓋未完成回到原來位置而扣引扳機的話，槍身內部活塞將會損壞)
- 扣引扳機後BB彈被發射出去。
- 若不再繼續發射時，將保險推到”不射擊時”狀態。



▲注意

- 保管時請將彈匣抽出，
 - 彈匣移除後，並將保險
 - 請勿將槍在待擊發狀態並指向安全的方向射擊，務必確定槍中已無BB彈殘留才行。
- 推到”不射擊時”狀態，保管在小孩子無法拿得到的安全場所。
- 下做長時間的放置或保管。(此將是發射彈簧性能低下的原因)

▲WARNING 請務必嚴格遵守 使用操作說明書

此低動能遊戲用槍是針對喜愛射擊運動的消費者所開發。避免因使用方法不正確或改造所發生的故障或事故，請務必詳讀說明書，正確的操作享受愉快的射擊運動。

- 除了發射時外，不要將手指頭掛在板機上。
- 選擇安全與適當標靶
- 在非使用期間，請保持保險關閉且退彈的狀態，就算在非使用狀態，也要如同其已裝彈。
- 如任何的機械產品，槍的保險也可能失效。即使在保險關閉的狀態下也請小心的操作此槍，請勿將槍口對人。
- 千萬不要對堅硬或平坦表面、水面射擊，以避免跳彈。
- 請妥善保管產品在未成年孩童無法伸手取得的場所。
- 每次使用前後都應該檢查擋彈物，假如擋彈物表面有磨損失效或是反彈時請停止使用。
- 請使用高品質BB彈，請勿使用①口徑大於6mm②表面不平滑的③重複使用過的BB彈④非本說明書指名的發射物。
- 檢查任何掉落之槍枝，以確保未影響其功能。

★使用低動能遊戲用槍前，請務必戴上保護眼鏡或面罩。



★使用低動能遊戲用槍前，請務必詳讀說明書內容。



★請不要在公開場合使用低動能遊戲用槍，也請不要拿低動能遊戲用槍對準人或動物。



★請確認後再發射BB彈方向，附近無人或動物存在。



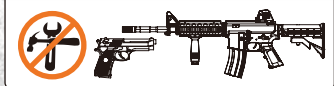
★不可攜帶低動能遊戲用槍在公共場所行走，請務必裝在袋子或盒子內。



★請不要由槍口向內探視。



★不可任意改造或加工低動能遊戲用槍，私自改造加工會造成產品損壞、保固失效，導致使用上不安全，甚至觸法送辦。



AAKACZ16 系列零件表

NO.	零件名稱	NO.	零件名稱
P02	氣缸後罩	B01H	槍管
P03	槍管導管		
P04	保險桿	F02	平頭軸(氣缸用)
P05	槍管接筒	F03	軸(擊鐵用)
P06	氣缸卡榫	F04	軸(擊鐵箱用)
P07	接筒卡榫	F09	握柄固定梢
P08	氣缸	F14	軸(握柄用)
P09	活塞	F17	軸(扳機用)
P10	彈簧支座	F20	軸(扳機連桿用)
P24	活塞卡榫	F116	扳機連桿(左)
P111	擊鐵		
P112	擊鐵連動片	S03	活塞卡榫扭簧
P113	槍身上蓋	S04	活塞壓簧
P114	扳機	S05	擊鐵扭簧
P115	扳機連桿(右)	S07	槍管導管壓簧
P118	擊鐵箱(左)	S20	扳機扭簧
P119	擊鐵箱(右)		
P120	握柄	E03	⊕托(特)3.0X6束黑螺絲
P121	槍身本體	E05	槍身配重
P122	槍柄(左)	E09	⊕2.3X12束鉸螺絲
P123	槍柄(右)	E20	槍柄配重
		K09	氣缸用貼紙
Z01	活塞固定座		
KA16-Z01	鋅合金保險片	U1	彈匣卡榫組件
		U2	彈匣總組件
R01	活塞迫緊	X1	內槍管組件
R02	子彈迫緊	X2	氣缸組件