

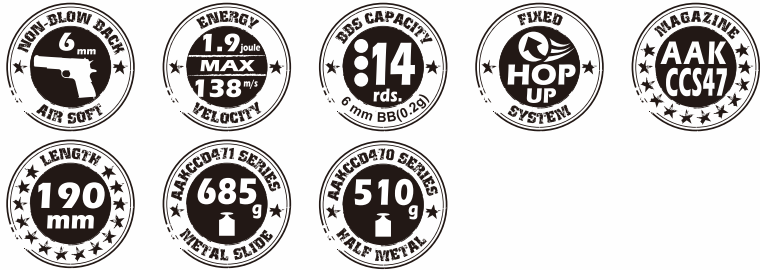
2022



MADE IN TAIWAN

AAKCCD47 系說明書

AAKCCD47 INSTRUCTION MANUAL



KWC KWIEN WELL TOY INDUSTRIAL CO., LTD
www.kwcgun.com

台南市仁德區義林路168巷89號
NO. 89, LN. 168, YILIN RD., RENDE DIST., TAINAN CITY 71752, TAIWAN (R.O.C)
TEL: +886-6-2798175 FAX: +886-6-2798176 sales@kwcgun.com

操作說明 / OPERATION

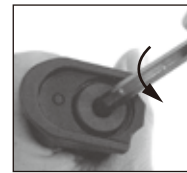
射擊前的準備

BEFORE SHOOTING



1. 按下卡榫
Press the button.
2. 取出彈匣
Release the magazine.

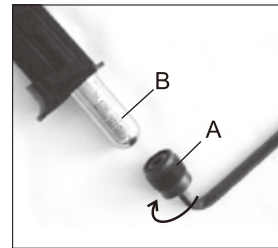
3. 使用六角板手反時針方向取出彈匣底內件。



Use hexagonal wrench to remove the magazine cap by counter-clockwise.

4. 逆時針轉出彈匣底內件後，置入小鋼瓶B，再以順時針方向鎖緊彈匣底內件A。當刺破鋼瓶出氣時，請快速鎖緊。

Turn the magazine cap out counter-clockwise, and place CO2 cartridge B inside the magazine. Rapidly turn the screw A clockwise when piercing the cartridge in the magazine.



5. 拉下滑粒。
Pull the magazine follower down.

6. 填裝B.B彈。
Loading BBs.

為了使擊發順暢，填裝方法是讓B.B彈在彈匣中一粒接著一粒。
For smooth shooting, Load BBs one by one.



7. 最多可裝14粒。
Maximum BB capacity is 14 rounds.

射擊

SHOOTING

1. 將裝好B.B彈的彈匣插入槍身往上推入，直到彈匣卡榫發出“卡嗒”為止。

Insert fully loaded magazine in the airgun until you hear the sound of “CLICK”.



2. 瞄準目標物扣引扳機，即可擊發。
Aim the target and pull the trigger.

▲ 注意：在長期不使用的狀態下，請將彈匣內的氣體洩放掉。

▲ CAUTION: Release all of the gas in the magazine when it will not use in long-term period.



安全裝置 SAFETY



故障原因與排除 / BREAK DOWN FAQ

1. 不良的B.B彈是造成卡彈的原因，請使用品質優良的 B.B彈。

Bad quality BB is the main reason to cause BB jam. Please use high quality BB avoid jamming problem.

2. 當卡彈時，請儘可能先取出彈匣，再以不傷槍管的軟質細棒（不可大於6mm直徑），從槍口置入清除。

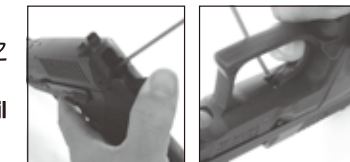
When BB jamming, first please release the magazine from pistol then use a soft stick (diameter no bigger than 6mm) to clear up the barrel.

3. 空擊發易造成零件損耗，請避免此動作。

Please avoid dry firing, for it could cause parts deformed or damage.

4. 當扣引扳機時，此時B.B彈即同時在上膛階段，不可扣引一半時又回復，因為如此的動作，將有可能上膛兩發B.B彈。

Pulling trigger will load BB in the barrel. Therefore, please do not pull the trigger half way and release the trigger. This action could load 2 BBs in the pistol and cause jamming.



5. 使用一段時間後，請再次用含矽油之潤滑油，潤滑撞針及扳機軸心。

Please spray lubricant(with silicone oil type) at firing pin and trigger pin after a certain of use, pictures shown.



WARNING 警告

請務必嚴格遵守使用說明指導書
READ THIS OWNER'S MANUAL COMPLETELY

此低動能遊戲用槍是針對喜愛射擊運動的消費者所開發。避免因使用方法不正確或改造所發生的故障或事故，請務必詳讀說明書，正確的操作享受愉快的射擊運動。

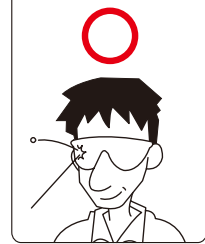
1. 除了發射時外，不要將手指頭掛在扳機上。
2. 選擇安全與適當標靶。
3. 在非使用期間，請保持保險關閉且退彈的狀態，就算在非使用狀態，也要如同其已裝彈。
4. 如任何的機械產品，槍的保險也可能失效。即使在保險關閉的狀態下也請小心的操作此槍，請勿將槍口對人。
5. 千萬不要對堅硬或平坦表面、水面射擊，以避免跳彈。
6. 請妥善保管產品在未未成年童無法伸手取得的場所。
7. 每次使用前後都應該檢查擋彈物，假如擋彈物表面有磨損失效或是反彈時請停止使用。
8. 請使用高品質BB彈，請勿使用①口徑大於6mm②表面不平滑的③重複使用過的BB彈④非本說明書指名的發射物。
9. 最高的使用及儲藏CO2小鋼瓶環境為50°C(122°F)以內，高溫可能會造成CO2小鋼瓶過熱甚至爆炸。
10. 檢查任何掉落之槍枝，以確保未影響其功能。

This airgun is intended for recreational or training purposes. To prevent improper handling, modification or alteration causing malfunction or accident, please read the owner's manual carefully. Enjoy the pleasant shooting experience by proper operation.

1. Do not put your finger on the trigger except shooting.
2. Please choose safe and proper target.
3. Please always keep the airsoft on safe and unloaded when not using.
4. Like all mechanical devices, an airsoft safety could fail. Always handle the airsoft safely even when the safety is "on safe". Never point the airsoft at any people.
5. To avoid ricochet. Never shoot at a hard or flat surface or at water.
6. Keep the airsoft out of reach for underage children.
7. Your backstop should be inspected for worn out before and after each use. Discontinue use of the backstop if surface shows signs of failure or ricochet.
8. Only use high quality BB. Never use ①BB diameter larger than 6 mm ②BB with unsmoothed surface ③reused BB that has been fired ④incorrect projectiles not design for this airsoft.
9. Do not expose CO2 cartridges to heat or store them at temperatures above 50°C (122°F). CO2 cartridges may over heat or explode at temperatures above 50°C (122°F).
10. Check any gun that has been dropped to ensure that its function has not been affected.

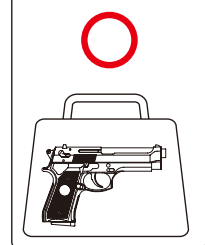
★使用低動能遊戲用槍前，請務必戴上保護眼鏡或面罩。

★Always wear eye protection when using airsoft.



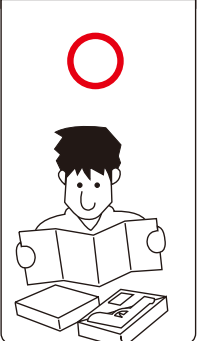
★攜帶低動能遊戲用槍在公共場所行走，請務必裝在袋子或盒子內。確認並未上膛和開啓保險。

★When in public, always carry the airsoft in a locked carrying case or bag. Make sure it is unloaded and on safe.



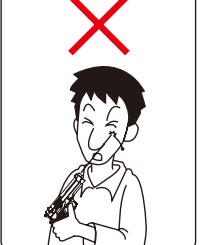
★使用低動能遊戲用槍前，請務必詳讀說明書內容。

★Read the owner's manual before using the airsoft.



★請不要由槍口向內探視。

★To Avoid accidental discharge, do not look directly into the barrel.



★請不要在公開場合使用低動能遊戲用槍，也請不要拿低動能遊戲用槍對準人或動物。

★Never brandish or aiming this airsoft at any people or animals. Brandish this airsoft in public is dangerous and may be a crime.



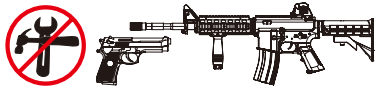
★請確認後再發射BB彈方向，附近無人或動物存在。

★Always be aware of your surrounding before and during shooting and select a safe area for target practice.



★不可任意改造或加工低動能遊戲用槍，私自改造加工會造成產品損壞、保固失效，導致使用上不安全，甚至觸法送辦。

★Disassemble, modify, or alter of your airsoft may cause malfunction, revoke your warranty, make it unsafe to use and even break the law.



請不要忘了，雖然自己知道這只是玩具，但不知道的人會以為這是真槍。

Do not display this airsoft in public—it may confuse people and may be a crime.

KCCD47 系列 零件表 KCCD47 SERIES PARTS LIST

NO.	零件名稱	NO.	零件名稱	NO.	零件名稱
UKG01-P31	心棒蓋迫緊	Z404	鈹機連桿(右)	S401	彈匣壓簧
P401	擊鐵箱(左)	Z407	保險強制型配件	S402	撞針緩衝扭簧
P402	擊鐵箱(右)	Z702	上蓋(金屬)	S404	心棒壓簧
P403	彈匣底內件			S406	鈹機扭簧
P405	彈匣底座	R01	子彈迫緊HOP-UP	S407	撞針扭簧
P406	上蓋止動片			S410	擊鐵扭簧
P407	彈匣滑粒	B03	鈹機連動件軸	S420	保險扭簧
P408	彈匣底座定位件	B06-A	心棒	S709	彈匣卡榫壓簧
P420	槍管連動件	B33	氣瓶頂針		
P701	槍身本體	B215	氣瓶頂針迫緊	SM1	鈹機連動件扭簧
P702	上蓋(塑膠)	B413	槍管	E02	企眼
P703	槍柄	B420	保險強制型配件軸	EA023	⊕ 2.3X8束黑
P707	彈匣卡榫	B478	撞針軸	ED008	E型扣環
P709	導管配件	UKG01-B19	心棒蓋	G001	O型環 0.8X11.3id
P417	擊鐵			G004	O形環 1X3
P715	保險(左)	F401	心棒壓簧墊圈	G005	O型環 1X4
P722	彈匣卡榫配件	F402	鈹機連桿軸	G006	O形環 1X5
P725	銘板	F403	鈹機連桿(左)	G009	O型環 1X7
P727	槍管套(短)	F404	軸(鈹機用)	G013	O形環 1.45X6.9id
		F405	軸A(本體用)		
Z02	鈹機	F406	擊鐵軸	X1	內槍管組件
Z03	鈹機連動件	F407	KA-01軸(擊鐵箱)	U1	鈹機連桿組件
Z402	撞針	F804	鈹機連桿軸	U2	氣瓶頂針組件

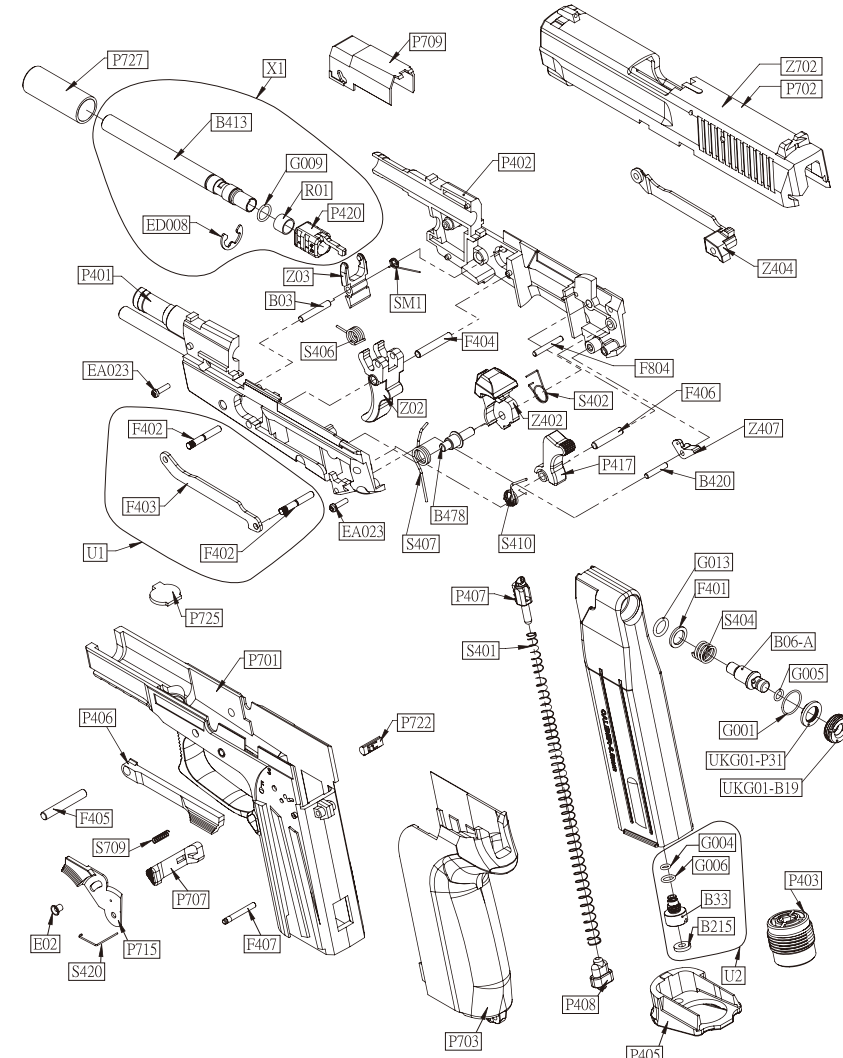
零件有時為了改良而不經預告變更

KCCD47 系列 零件表 KCCD47 SERIES PARTS LIST

NO.	UNIT	NO.	UNIT	NO.	UNIT
UKG01-P31	VALVE PACKING	Z404	TRIGGER BAR (R)	S401	MAGAZINE SPRING
P401	CHASSIS (L)	Z407	TRIGGER BAR BLOCK	S402	FIRING PIN BUFFER SPRING
P402	CHASSIS (R)	Z702	SLIDE (METAL)	S404	VALVE SPRING
P403	MAGAZINE BOTTOM CAP			S406	TRIGGER SPRING
P405	MAGAZINE BASE	R01	RUBBER CHAMBER	S407	FIRING PIN SPRING
P406	SLIDE STOPPER			S410	HAMMER SPRING
P407	MAGAZINE FOLLOWER	B03	TRIGGER TOW PIN	S420	SAFETY SPRING
P408	MAGAZINE BASE JOINT	B06-A	VALVE	S709	MAGAZINE CATCH SPRING
P420	BARREL TOW	B33	PUNCTURE VAVLE		
P701	FRAME	B215	PUNCTURE VAVLE PACKING	SM1	TRIGGER TOW SPRING
P702	SLIDE (PLASTIC)	B413	BARREL	E02	EYE COUPLING
P703	GRIP	B420	TRIGGER BAR BLOCK PIN	EA023	SCREW 2.3X8
P707	MAGAZINE CATCH	B478	FIRING PIN	ED008	E-RING
P709	OUTER BARREL COVER	UKG01-B19	VALVE CAP	G001	O-RING 0.8X11.3id
P417	HAMMER			G004	O-RING 1X3
P715	SAFETY (L)	F401	VALVE SPRING GASKET	G005	O-RING 1X4
P722	MAGAZINE CATCH ACCESSORY	F402	TRIGGER BAR AXLE	G006	O-RING 1X5
P725	SYMBOL PLATE	F403	TRIGGER BAR (L)	G009	O-RING 1X7
P727	OUTER BARREL SLEEVE	F404	PIN (TRIGGER)	G013	O-RING 1.45X6.9id
		F405	PIN A (FRAME)		
Z02	TRIGGER	F406	FIRING PIN AXLE	X1	INNER BARREL UNIT
Z03	TRIGGER TOW	F407	KA-01 AXLE (CHASSIS)	U1	TRIGGER BAR UNIT
Z402	FIRING PIN	F804	TRIGGER BAR AXLE	U2	INNER VALVE UNIT

Spare parts may be modified for quality improvement and such modification may be without advance notice.

KCCD47 系列 零件分解圖 KCCD47 SERIES EXPLODED VIEW



K08-00634-XC 2022©12