



AAKCCF&B15 系列說明書 AAKCCF&B15 INSTRUCTION MANUAL

KWT KWIEN WELL TOY INDUSTRIAL CO., LTD
www.kwgun.com
台南市仁德區義林路168巷89號
NO.89, LN. 168, YILIN RD.,
RENDE DIST., TAINAN CITY
71752, TAIWAN (R.O.C.)
TEL : +886-6-2798175
FAX : +886-6-2798176
sales@kwgun.com
www.kwgun.com



操作/OPERATION

操作說明

OPERATION

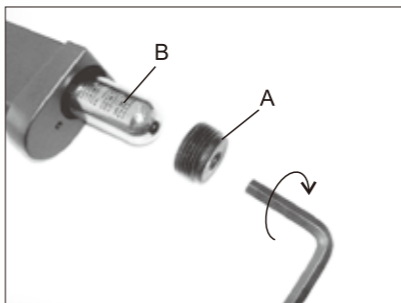
1. 取出彈匣。
RELEASE MAGAZINE.



1. 按下卡榫
Push the button
 2. 取出彈匣
Release the magazine
- ▲注意：請勿使彈匣直接掉落地面，以防止變形或損壞。
▲CAUTION: Magazine falling directly on the ground could cause deform or damage on it. Please be aware.

2. CO2小鋼瓶12g的使用
INSTALLING 12G CO2 CARTRIDGE

逆時針轉出彈匣底內件後，置入小鋼瓶B，再以順時針方向鎖緊彈匣底內件A。當刺破鋼瓶出氣時，請快速鎖緊。
Turn the magazine cap out counter-clockwise and place CO2 cartridge B inside the magazine. Rapidly turn the screw A clockwise when piercing the cartridge in the magazine.



- ▲注意：為維護彈匣使用壽命，請盡可能不要殘留CO2氣體於彈匣內。
▲CAUTION: To protect your magazine, please release all of the CO2 out of the magazine after every use.

3. 填裝BB彈
LOADING BBs
為了使擊發順暢，填裝方法是讓B. B彈在彈匣中一粒接著一粒。
For smooth shooting, Load BBs one by one.

- ▲注意：彈匣最多可裝27發B.B彈，如強行裝入更多，可能造成不當損壞及無法上膛，請注意。
▲CAUTION: Magazine max capacity is 27 rounds. Loading more than this quantity could bring malfunctions.

4. 彈匣上膛
INSERTING THE MAGAZINE
將裝好BB彈的彈匣插入槍身往上推入，直到彈匣卡榫發出"卡嗶"為止。Insert fully loaded magazine in the airsoft until you hear the sound of "CLICK".

5. B. B彈上膛
CHAMBERING THE BB
將上蓋往後拉到底，放開上蓋則上蓋會自動回位，同時亦將B. B彈送上膛完成射擊準備。
Pulling the slide back. When the slide has been pulled completely back, release the slide without pushing and the BBs will be chambered.



- ▲注意：拉動上蓋時，請勿將手指扣住扳機，以免發生不當射擊，造成危險。
▲CAUTION: The gun is now cocked and will fire when the trigger is pulled. Be careful not to fire accidentally.

6. 單連發及保險切換
SWITCH SEMI AUTO AND FULL AUTO



- ▲注意：必須在上膛狀態下保險才可關閉
▲CAUTION: Safety can only be turned on when this airsoft is cocked.



- ▲注意：上蓋滑動時，注意縫隙夾到手指
▲CAUTION: This airsoft has a realistic blowback feature. Be careful of the pinch point.

7. 射擊
SHOOTING
對準目標區後扣下扳機，則B. B彈將被射擊出去。
Aim the target and pull the trigger to shoot.



- ▲注意：B. B彈用完時，上蓋會後定卡住。
▲CAUTION: hold open function as real pistol.

拆解/DIS-ASSEMBLY

1. 取出彈匣
Release the magazine.
Press the button as picture.
2. 按下右邊卡鍵鈕
Spin the Barrel Lock Pin down as picture.
3. 旋轉左邊導管卡榫置下方
Spin the Barrel Lock Pin down as picture.



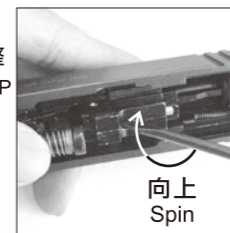
4. 上蓋即可取出
Remove the slide.



注意：取出上蓋時需小心回位導桿鬆脫彈出。

CAUTION: pay attention on the recoil spring guide and do not let it leap from the slide.

5. HOP UP調整
adjust HOP UP system.



故障的原因與排除

BREAK DOWN FAQ

- * 卡彈可能原因：
the reason for BB jam :
- a. 裝彈排列不整齊
the BB in the magazine does not arrange very well.
 - b. 不良B. B彈
bad quality BB



- * 排除：將上蓋往後拉，向下倒出即可。
Solution: pull the slide back and pour the BB out from slide.



- * 射擊過程中偶而會發生，在作動時上蓋突然停止無法作動，而擊鐵回到原位，彈匣中仍有足夠瓦斯和BB彈。
During the shooting process, sometimes the Slide and the Hammer stop unexpectedly.

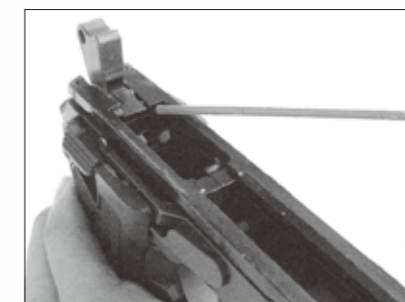


- * 排除：此時並非故障，只需重新上膛便可繼續使用。
Solution: This is not a failure. Just reload and operate again.

* 保養及維護 MAINTENANCE GUIDE

當射擊約2000發時，建議你如圖所示，以矽油脂適量在上蓋與本體滑動接觸面及擊鐵、撞針作動處潤滑，以利滑動。

After every 2,000 BB shots, lubricating the Firing pin and Track as pictures below is recommended.



WARNING 警告

請務必嚴格遵守 使用說明指導書

For your safety, please read this manual carefully before use.

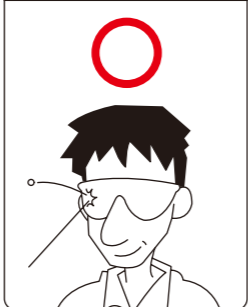
此低動能遊戲用槍是針對喜愛射擊運動的消費者所開發。避免因使用方法不正確或改造所發生的故障或事故，請務必詳讀說明書，正確的操作享受愉快的射擊運動。

- 除了發射時外，不要將手指頭掛在板機上。
- 選擇安全與適當標靶
- 在非使用期間，請保持保險關閉且退彈的狀態，就算在非使用狀態，也要如同其已裝彈。
- 如任何的機械產品，槍的保險也可能失效。即使在保險關閉的狀態下也請小心的操作此槍，請勿將槍口對人。
- 千萬不要對堅硬或平坦表面、水面射擊，以避免跳彈。
- 請妥善保管產品在未成年的孩童無法伸手取得的場所。
- 每次使用前後都應該檢查擋彈物，假如擋彈物表面有磨損失效或是反彈時請停止使用。
- 請使用高品質BB彈，請勿使用①口徑大於6mm②表面不平滑的③重複使用過的BB彈④非本說明書指名的發射物。
- 最高的使用及儲藏CO2小鋼瓶環境為50°C (122°F) 以內，高溫可能會造成CO2小鋼瓶過熱甚至爆炸。
- 檢查任何掉落之槍枝，以確保未影響其功能。

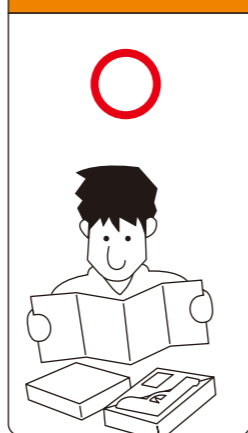
This airsoft is intended for recreational or training purposes. To prevent improper handling, modification or alteration causing malfunction or accident, please read the owner's manual carefully. Enjoy the pleasant shooting experience by proper operation.

- Do not put your finger on the trigger except shooting.
- Please choose safe and proper target.
- Please always keep the airsoft on safe and unloaded when not using.
- Like all mechanical devices, an airsoft safety can fail. Always handle the airsoft safely even when the safety is "on safe". Never point the airsoft at any people.
- Avoid ricochet. Never shoot at a hard or flat surface or at water.
- Keep the airsoft out of reach for small children.
- Your backstop should be inspected for wear before and after each use. Discontinue use of the backstop if surface shows signs of failure or ricochet.
- Only use high quality BB. Never use ①BB diameter larger than 6mm②BB with unsmoothed surface③reused BB that has been fired④incorrect projectiles not design for this airsoft
- Do not expose CO2 cartridges to heat or store them at temperatures above 50°C (122°F). CO2 cartridges may over heat or explode at temperatures above 50°C (122°F).
- Check any gun that has been dropped to ensure that its function has not been affected.

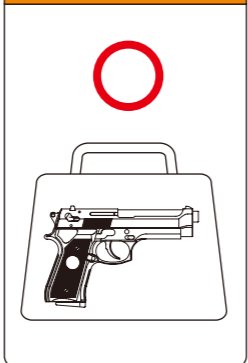
★使用低動能遊戲用槍前，請務必戴上保護眼鏡或面罩。
★Always wear eye protection when using airsoft.



★使用低動能遊戲用槍前，請務必詳讀說明書內容。
★Read the owner's manual before using the airsoft.



★不可攜帶低動能遊戲用槍在公共場所行走，請務必裝在袋子或盒子內。
★Always transport an airsoft in a locked carrying case. Make sure it is unloaded and on safe.



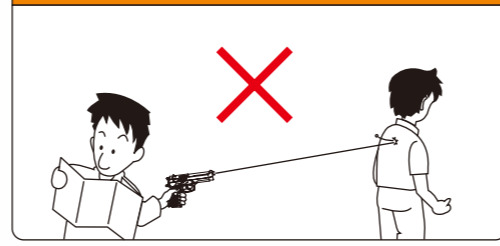
★請不要由槍口向內探視。
★To Avoid accidental discharge, do not look directly into the barrel.



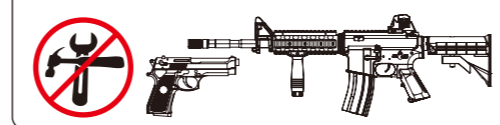
★請不要在公開場合使用低動能遊戲用槍，也請不要拿低動能遊戲用槍對準人或動物。
★Never brandish or aiming this airsoft at any people or domestic animals. Brandish this airsoft in public is dangerous and may be a crime.



★請確認後再發射BB彈方向，附近無人或動物存在。
★Always be aware of your surrounding before and during shooting and select a safe area for target practice.



★不可任意改造或加工低動能遊戲用槍，私自改造加工會造成產品損壞、保固失效，導致使用上不安全，甚至觸法送辦。
★Disassemble, modify, or alter of your airsoft may cause malfunction, void your warranty and may make it unsafe to use.

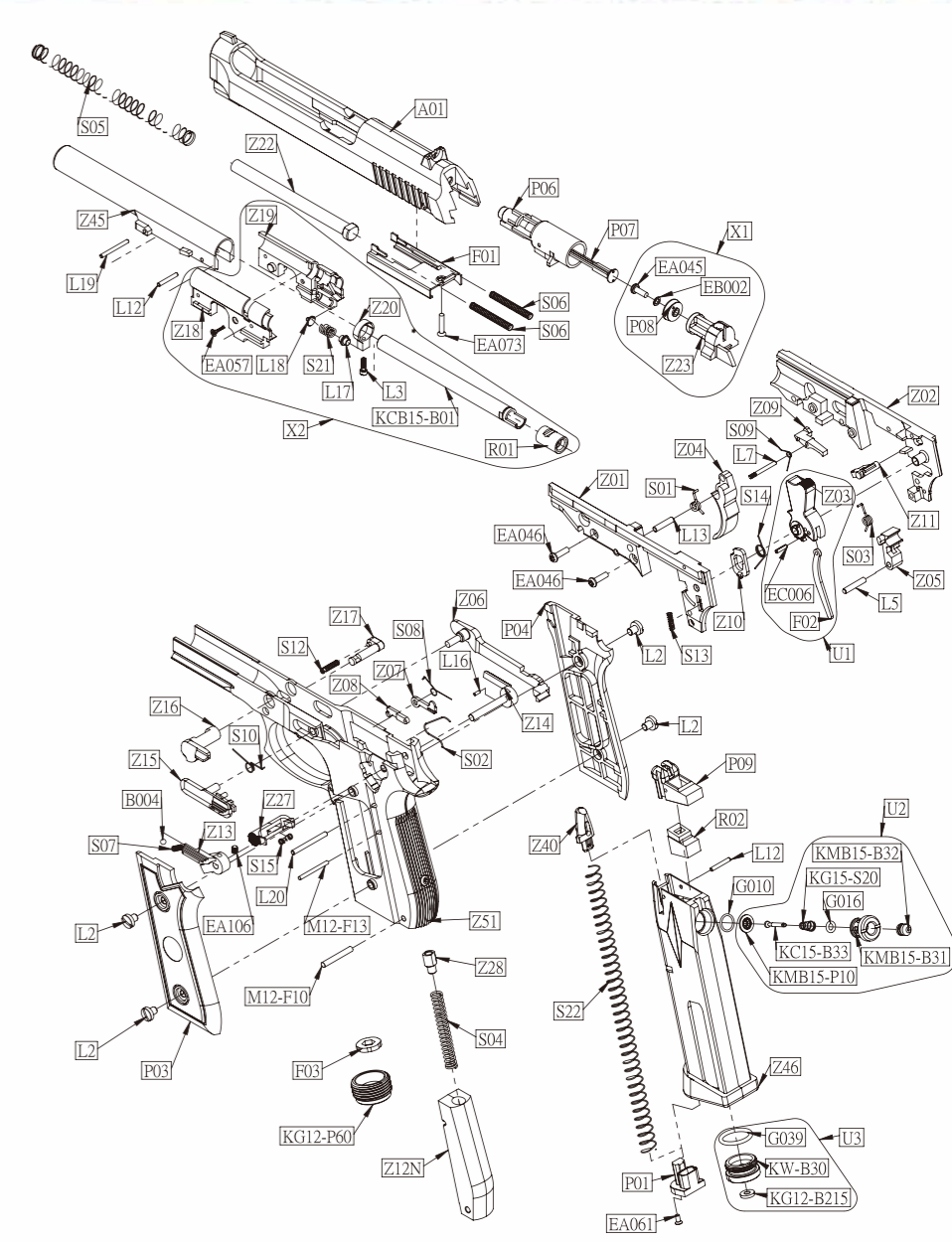


Do not display this pistol in public—it may confuse people and may be a crime. 請不要忘了，雖然自己知道這只是玩具，但不知道的人，會以為這是真槍。

AAKCCF&B15 系列 零件表 AAKCCF&B15 SERIES PARTS LIST

NO.	零件名稱	UNIT	NO.	零件名稱	UNIT	NO.	零件名稱	UNIT
P01	彈匣底件	MAGAZINE BASE JOINT	Z28	擊鐵導桿壓簧配件	HAMMER GUIDE SPRING ACCESSORY	KG12-B215	氣瓶頂針迫緊	PUNCTURE VAVLE PACKING
P03	槍柄(左)	GRIP (L)	Z40	滑粒	FOLLOWER			
P04	槍柄(右)	GRIP (R)	Z45	槍管導管	OUTER BARREL	S01	扳機扭簧	TRIGGER SPRING
P06	射嘴	LOADING NOZZLE	Z46	彈匣本體(短)	MAGAZINE FRAME	S02	扳機連桿扭簧	TRIGGER BAR SPRING
P07	氣流控制件	FLOATING VALVE	Z51	本體	FRAME	S03	擊鐵卡榫扭簧	HAMMER CATCH SPRING
P08	氣缸迫緊	CYLINDER PACKING				S04	擊鐵導桿壓簧	HAMMER STRUT SPRING
P09	彈匣上部	MAGAZINE RIB	F01	上蓋滑軌	SLIDE TRACK	S05	導桿回位壓簧	RECOIL SPRING
KMB15-P10	心棒迫緊	VALVE PACKING	F02	擊鐵導桿	HAMMER STRUT	S06	射嘴回位壓簧	LOADING NOZZLE RECOIL SPRING
KG12-P60	彈匣底內件	MAGAZINE BOTTOM CAP ACCESSORY	F03	彈匣底內件配件	MAGAZINE BOTTOM CAP ACCESSORY	S07	保險壓簧	SAFETY SPRING
			R01	子彈迫緊HOP-UP	RUBBER CHAMBER	S08	切換件扭簧	SWITCH SPRING
A01	上蓋	SLIDE	R02	氣騰迫緊	GAS ROUTE PACKING	S09	連發卡榫扭簧	FULL AUTO CATCH SPRING
						S10	止動片扭簧	SLIDE STOPPER SPRING
Z01	擊鐵箱(左)	CHASSIS (L)	G010	O型環 1X8id	O-RING 1X8id	S12	卡鍵按鈕壓簧	BARREL PIN BUTTON SPRING
Z02	擊鐵箱(右)	CHASSIS (R)	G016	O型環 S-4	O-RING S-4	S13	氣閥門壓簧	VALVE LATCH SPRING
Z03	擊鐵	HAMMER	G039	O型環 2X15	O-RING 2X15	S14	撞針扭簧	FIRING PIN SPRING
Z04	扳機	TRIGGER				S15	彈匣卡榫壓簧	MAGAZINE CATCH SPRING
Z05	擊鐵卡榫	HAMMER CATCH	L2	槍柄螺絲	GRIP SCREW	KG15-S20	心棒壓簧	VALVE SPRING
Z06	扳機連桿	TRIGGER BAR	L3	BAX調整螺絲	BAX ADJUST SCREW	S21	槍管左右蓋壓簧	INNER BARREL CASE SPRING
Z07	連發切換件	FULL AUTO SWITCH	L5	擊鐵卡榫軸	HAMMER CATCH PIN	S22	短彈匣壓簧	MAGAZINE SPRING
Z08	切換件連桿	SWITCH BAR	L7	連發卡榫軸	FULL AUTO CATCH PIN			
Z09	連發卡榫	FULL AUTO CATCH	L12	彈匣上部軸	MAGAZINE RIB PIN	B004	鋼珠	BEARING
Z10	氣閥門	VALVE LATCH	L13	扳機軸	TRIGGER PIN	EA045	⊕M3X8XP0.5	SCREW M3X8XP0.5
Z11	撞針	FIRING PIN	L16	單連發連桿軸	FULL/SEMI AUTO SWITCH AXLE	EA046	⊕M3.0X10 黑 P=0.5	SCREW M3.0X10
Z12N	握柄配件	GRIP PLUG	L17	後座力緩衝件	BLOWBACK BUFFER	EA057	⊕M2.0X8 黑 P=0.4	SCREW M2.0X8
Z13	保險(左)	SAFETY (L)	L18	調整件定位件	BARREL ADJUSTOR JOINT	EA061	⊕M2.3X5 束黑熱	SCREW 2.3X5
Z14	保險(右)	SAFETY (R)	L19	導管前部軸	OUTER BARRELFRONT PIN	EA073	⊕M2.6X14XP0.45 束黑熱	SCREW M2.6X14XP0.45
Z15	止動片	SLIDE STOPPER	L20	擊鐵箱軸	CHASSIS PIN	EA106	止付螺絲3.0X4 黑 P=0.5	SET SCREW 3.0X4
Z16	導管卡榫	BARREL CATCH				EB002	彈簧墊圈	SPRING WASHER
Z17	卡鍵按鈕	BARREL PIN BUTTON	M12-F13	撞針固定軸	FIRING PIN POSITION PIN	EC006	彈簧銷	SPRING PIN
Z18	槍管左蓋	INNER BARREL CASE (L)	M12-F10	握柄配件定位軸	GRIP ACCESSORY LOCATOR PIN			
Z19	槍管右蓋	INNER BARREL CASE (R)	KCB15-B01	槍管HOP-UP	INNER BARREL HOP-UP	X1	氣缸組件	CYLINDER UNIT
Z20	調整件	ADJUST PLATE	KW-B30	氣瓶頂針(短彈匣用)	PUNCTURE VAVLE	X2	內槍管組件	INNER BARREL UNIT
Z22	導桿	RECOIL GUIDE	KMB15-B31	氣閥本體	VALVE FRAME	U1	擊鐵組件	HAMMER UNIT
Z23	氣缸	CYLINDER	KMB15-B32	心棒後部	VALVE REAR	U2	氣閥組件	VALVE UNIT
Z27	彈匣卡榫	MAGAZINE CATCH	KC15-B33	心棒	VALVE	U3	氣瓶頂針組件	PUNCTURE VAVLE UNIT

AAKCCF&B15 系列 零件分解圖 AAKCCF&B15 SERIES EXPLORED VIEW



※零件有時為了改良而不經預告變更。
Spare parts may be modified for quality improvement
And such modification may be without advance notice.