



AAKCF54 系列說明書 AAKCF54 INSTRUCTION MANUAL

KWC KIEN WELL TOY INDUSTRIAL CO., LTD
www.kwcgun.com

台南市仁德區義林路168巷89號
NO.89, LN. 168, YILIN RD.,
RENDE DIST., TAINAN CITY
71752, TAIWAN (R.O.C.)
TEL : +886-6-2798175
FAX : +886-6-2798176
sales@kwcgun.com
www.kwcgun.com



操作/OPERATION

操作說明

OPERATION

1. 取出彈匣
RELEASE MAGAZINE.



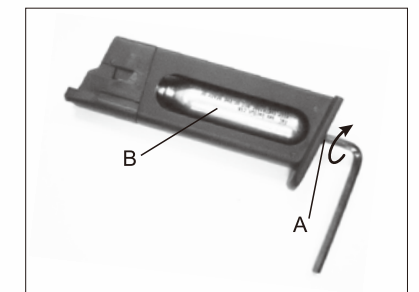
- ▲注意: 請勿使彈匣直接掉落地面, 以防止變形或損壞。
- ▲CAUTION: Magazine directly falling on ground could cause deform or damage on it. Please be aware.

2. CO2小鋼瓶的使用

INSTALLING 12G CO2 CARTRIDGE

逆時針轉出旋塞後, 置入小鋼瓶B, 再以順時針方向鎖緊旋塞A。當刺破鋼瓶出氣時, 請快速鎖緊。

Turn the magazine cap out counter-clockwise and place CO2 cartridge B inside the magazine. Rapidly turn the screw A clockwise when piercing the cartridge in the magazine.



- ▲注意: 為維護彈匣使用壽命, 請儘可能不要殘留CO2氣體於彈匣內。
- ▲CAUTION: To protect your magazine, please release all of the CO2 out of the magazine after every use.



3. 裝填BB彈

LOADING BB BULLET

將裝彈器套入彈匣上方, 然後再將BB彈放入透明管中, 以BB彈通條將BB彈塞入彈匣內。

Put the quick loader on the top of magazine and load the BBs into the loader to load the BBs into the magazine.

4. 彈匣上膛

INSERTING THE MAGAZINE

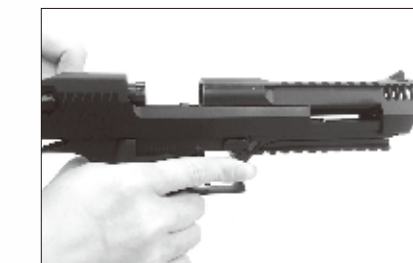
將裝好B.B彈的彈匣插入槍身往上推入, 直到彈匣卡榫發出“卡嗒”為止。Insert fully loaded magazine in the airsoft until you hear the sound of “CLICK”.

5. B.B彈上膛

CHAMBERING THE BB

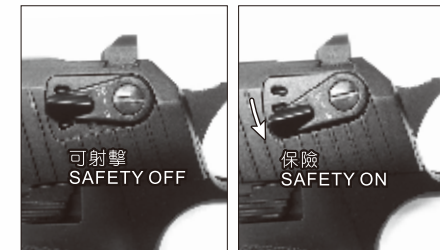
將上蓋往後拉到底, 放開上蓋則上蓋會自動回位, 同時亦將B.B彈送上膛完成射擊準備。

Pulling the slide back. When the slide has been pulled completely back, release the slide without pushing and the BBs will be chambered.



- ▲注意: 拉動上蓋時, 請勿將手指扣住扳機, 以免發生不當射擊, 造成危險。
- ▲CAUTION: The gun is now cocked and will fire when the trigger is pulled. Be careful not to fire accidentally.

6. 保險切換 SWITCH SAFETY



7. HOP UP調整

HOP-UP ADJUSTMENT

往左B.B彈上飄減弱, 往右B.B彈上飄增強。

Turn right to make Hop-up bigger and turn left to make Hop-up smaller.



8. 射擊

SHOOTING

對準目標區後扣下扳機, 則B.B彈將被射擊出去。

Aim the target and pull the trigger. Then the BB will be shot.



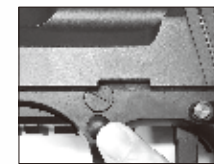
- ▲注意: B.B彈用完時, 上蓋會後定卡住。
- ▲CAUTION: hold open function as real pistol.

故障/BREAK DOWN

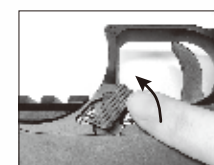
拆解/ DIS-ASSEMBLY



1. 先退下彈匣。
release the magazine



2. 按下槍管卡榫按鈕。
Press and hold the barrel locker pin.



3. 同時另一邊槍管卡榫往下迴轉。
Switch the barrel locker on the other side.

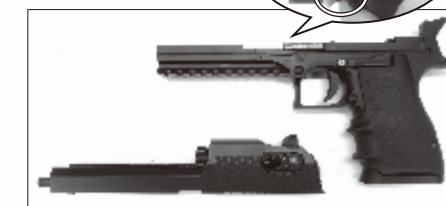


4. 將槍管往前拉出, 再往上拿出。
Move barrel forward a little bit, then remove the barrel.



5. 滑蓋向前稍微強推即可分離。
Push slide forward to release it.

6. 扣住扳機可以順勢將滑蓋退出或裝入。
Holding trigger will help to remove/insert slide.



7. 槍枝拆解完成 Disassembly done.

故障的原因與排除 BREAK DOWN FAQ

- * 卡彈可能原因:
the reason for BB jam :

- a. 裝彈排列不整齊。
the BB in the magazine does not arrange very well.
- b. 不良B.B彈。
bad quality BB
- c. 空擊發易造成零件損耗, 請避免此動作。
Please avoid dry firing, for it could cause parts deformed or damage.

- * 排除: 將上蓋往後拉, 向下倒出即可。
Solution: pull the slide back and pour the BB out from slide.



- * 射擊過程中偶而會發生, 在作動時上蓋突然停止無法作動, 而擊鐵回到原位, 彈匣中仍有足夠瓦斯和B.B彈。
During the shooting process, sometimes the Slide and the Hammer stop unexpectedly.

! WARNING 警告

請務必嚴格遵守 使用說明指導書

For your safety, please read this manual carefully before use.

此低動能遊戲用槍是針對喜愛射擊運動的消費者所開發。避免因使用方法不正確或改造所發生的故障或事故, 請務必詳讀說明書, 正確的操作享受愉快的射擊運動。

1. 除了發射時外, 不要將手指頭掛在板機上。
2. 選擇安全與適當標靶
3. 在非使用期間, 請保持保險關閉且退彈的狀態, 就算在非使用狀態, 也要如同其已裝彈。
4. 如任何的機械產品, 槍的保險也可能失效。即使在保險關閉的狀態下也請小心的操作此槍, 請勿將槍口對人。
5. 千萬不要對堅硬或平坦表面、水面射擊, 以避免跳彈。
6. 請妥善保管產品在未成io年孩童無法伸手取得的場所。
7. 每次使用前後都應該檢查擋彈物, 假如擋彈物表面有磨損失效或是反彈時請停止使用。
8. 請使用高品質BB彈, 請勿使用①口徑大於6mm②表面不平滑的③重複使用過的BB彈④非本說明書指定的發射物。
9. 最高的使用及儲藏CO2小鋼瓶環境為50°C(122°F)以內, 高溫可能會造成CO2小鋼瓶過熱甚至爆炸。
10. 檢查任何掉落之槍枝, 以確保未影響其功能。

This airsoft is intended for recreational or training purposes. To prevent improper handling, modification or alteration causing malfunction or accident, please read the owner's manual carefully. Enjoy the pleasant shooting experience by proper operation.

1. Do not put your finger on the trigger except shooting.
2. Please choose safe and proper target.
3. Please always keep the airsoft on safe and unloaded when not using.
4. Like all mechanical devices, an airsoft safety can fail. Always handle the airsoft safely even when the safety is "on safe". Never point the airsoft at any people.
5. Avoid ricochet. Never shoot at a hard or flat surface or at water.
6. Keep the airsoft out of reach for small children.
7. Your backstop should be inspected for wear before and after each use. Discontinue use of the backstop if surface shows signs of failure or ricochet.
8. Only use high quality BB. Never use ①BB diameter larger than 6mm②BB with unsmoothed surface③reused BB that has been fired④incorrect projectiles not design for this airsoft
9. Do not expose CO2 cartridges to heat or store them at temperatures above 50°C(122°F). CO2 cartridges may over heat or explode at temperatures above 50°C(122°F).
10. Check any gun that has been dropped to ensure that its function has not been affected.



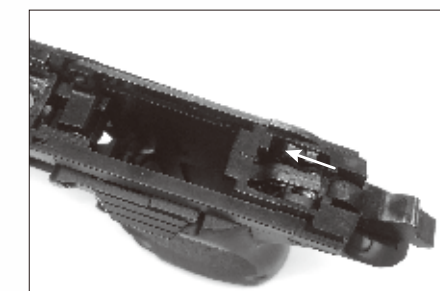
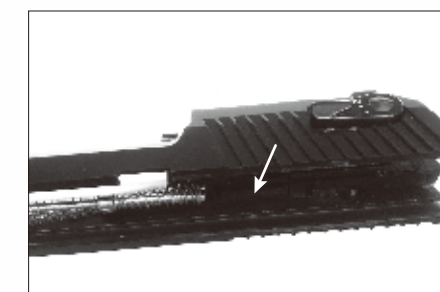
- * 排除: 此時並非故障, 只需重新上膛便可繼續使用。
SOLUTION: This is not the failure. Just reload it and operate again.

保養及維護

MAINTENANCE GUIDE

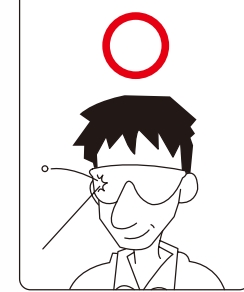
當射擊約2000發時, 建議你如圖所示, 以矽油脂適量在上蓋與本體滑動接觸面及擊鐵、撞針作動處潤滑, 以利滑動。

After every 2,000 BB shots, lubricating the Firing pin and Track as pictures below is recommended.

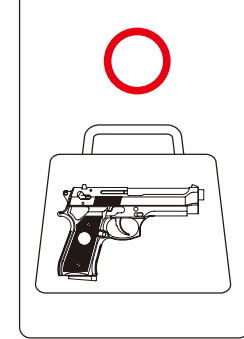


WARNING 警告

★使用低動能遊戲用槍前，請務必戴上保護眼鏡或面罩。
★Always wear eye protection when using airsoft.



★不可攜帶低動能遊戲用槍在公共場所行走，請務必裝在袋子或盒子內。
★Always transport an airsoft in a locked carrying case. Make sure it is unloaded and on safe.



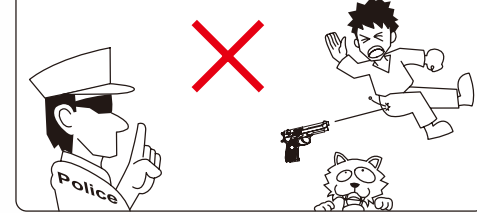
★使用低動能遊戲用槍前，請務必詳讀說明書內容。
★Read the owner's manual before using the airsoft.



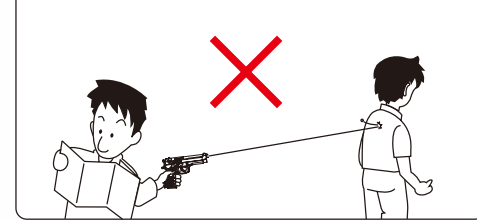
★請不要由槍口向內探視。
★To Avoid accidental discharge, do not look directly into the barrel.



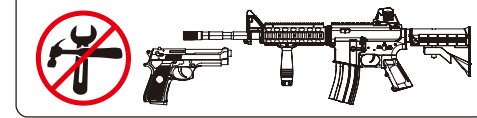
★請不要在公開場合使用低動能遊戲用槍，也請不要拿低動能遊戲用槍對準人或動物。
★Never brandish or aiming this airsoft in public is dangerous and may be a crime.



★請確認後再發射BB彈方向，附近無人或動物存在。
★Always be aware of your surrounding before and during shooting and select a safe area for target practice.



★不可任意改造或加工低動能遊戲用槍，私自改造加工會造成產品損壞、保固失效，導致使用上不安全，甚至觸法送辦。
★Disassemble, modify, or alter of your airsoft may cause malfunction, void your warranty and may make it unsafe to use.



Do not display this pistol in public—it may confuse people and may be a crime. 請不要忘了，雖然自己知道這只是玩具，但不知道的人，會以為這是真槍。

AAKCCF54 系列零件表

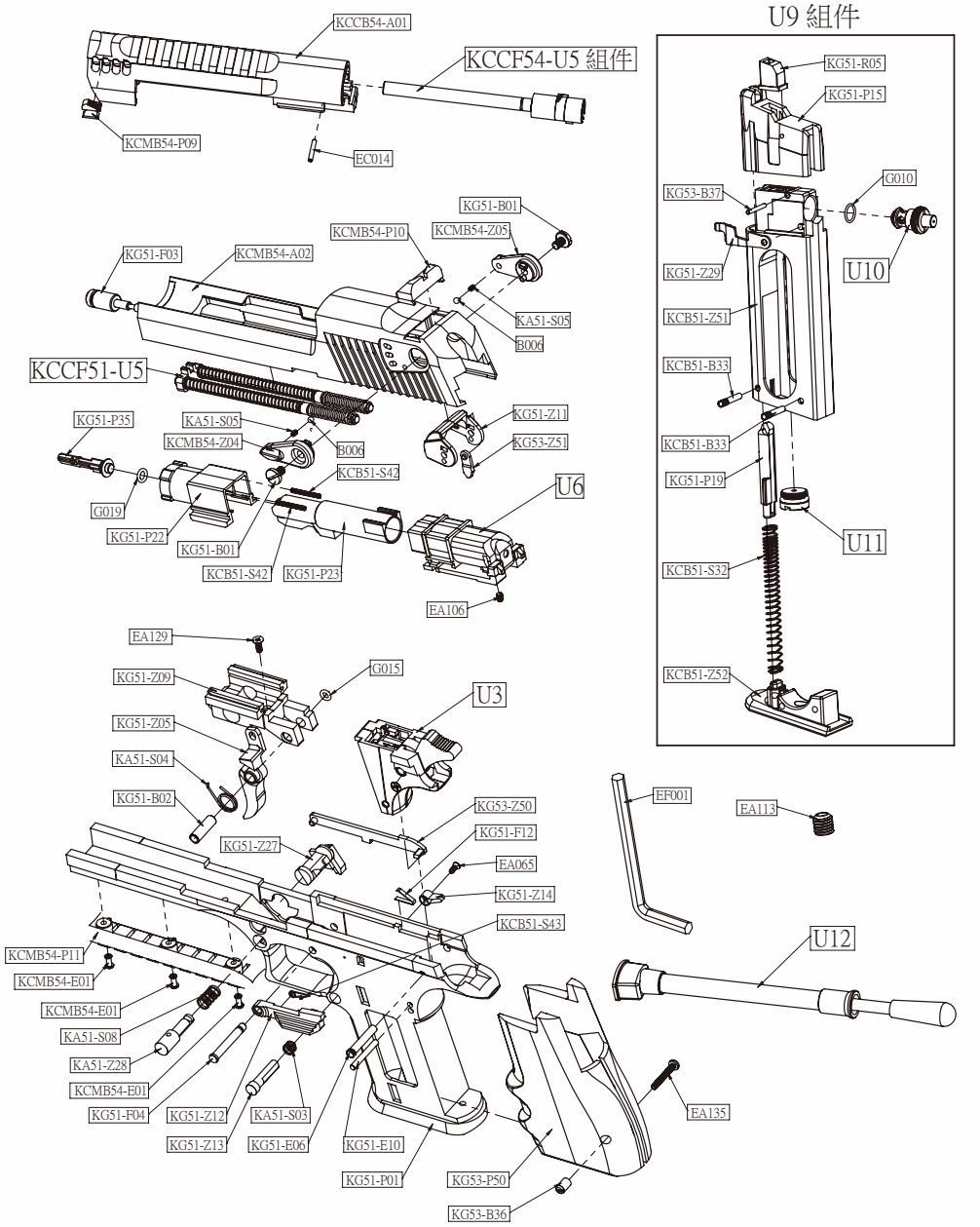
編號	零件名稱	編號	零件名稱
KG51-P01	本體	KCB51-Z52	彈匣底座
KCMB54-P09	前準星	KG53-Z52	撞針本體
KMB15-P10	心棒迫緊	KG53-Z53	擊鐵卡榫
KCMB54-P10	後準星	KG53-Z54	氣閥撞針
KCMB54-P11	戰術滑軌	KA51-S03	彈匣卡榫壓簧
KG51-P15	彈匣上部	KA51-S04	扳機扭簧
KG51-P17	槍管接筒	KA51-S05	保險壓簧
KG51-P18	HOP-UP調整圈	KA51-S08	導管卡榫按鈕壓簧
KG51-P19	滑粒	KG51-S13	撞針扭簧
KG51-P20	氣缸	KG51-S14	撞針定位片扭簧
KG51-P22	氣缸前罩(連發)	KG53-S18	連發擊鐵卡榫扭簧
KG51-P23	滑套射嘴	KG53-S19	連發卡榫扭簧
KG51-P27	槍管接筒前部	KG15-S20	心棒壓簧
KG51-P28	裝彈器	KG53-S20	連發撞針本體扭簧
KG03-P31	裝彈槽蓋B	KCB51-S31	擊鐵扭簧
KG03-P32	通條套頭	KCB51-S32	彈匣壓簧
KA51-P33	車製B.彈通條	KCB51-S33	上蓋回位壓簧前
KG51-P35	氣流控制件(1.4 J)	KCB51-S41	槍管扣環
KG53-P50	槍柄	KCB51-S42	射嘴回位壓簧
KCB51-P100	B.B彈透明管	KCB51-S43	上蓋止動片扭簧
KCMB54-A01	外槍管	WAG-51-DE-606B	上蓋回位壓簧後
KCMB54-A02	上蓋	DE-301	回位壓簧配件
KCMB54-Z04	保險左(小)	KG51-B01	保險螺絲
KCMB54-Z05	保險右(小)	KCCB54-B01	內槍管
KG51-Z05	扳機	KG51-B02	扳機軸套
KG51-Z09	導管定位件	KW-B02A	氣瓶頂針
KG51-Z11	保險連桿	KG51-B06	擊鐵軸套
KG51-Z12	上蓋止動片	KG51-B07	氣閥撞針軸套
KG51-Z13	彈匣卡榫左	KG51-B08	撞針定位片軸
KG51-Z14	彈匣卡榫右	KG51-B13	氣缸配件
KG51-Z18	氣缸後罩	KCB48-B27	心棒
KG51-Z19	回位壓簧導件	KCB51-B31	氣閥本體
KG51-Z22	擊鐵	KCB51-B32	心棒蓋
KG51-Z25	擊鐵箱左	KCB51-B33	軸(彈匣底座)
KG51-Z26	擊鐵箱右	KG53-B36	槍柄螺帽
KG51-Z27	槍管導管卡榫	KG53-B37	軸(彈匣上部用)
KA51-Z28	導管卡榫按鈕	KG12-B215	氣瓶頂針迫緊
KG51-Z29	止動片推桿	KG53-Z51	保險連桿配件
KG53-Z50	扳機連桿	KCMB54-E01	鋼釘-ø2.5*8L
KG53-Z51	保險連桿配件		

編號	零件名稱	編號	零件名稱
KG51-E06	軸(擊鐵)	KG51-F01	回位導桿
KG51-E10	軸(本體)	KG51-F03	上蓋定位件
EA053	⊕血2.0X5束鍍熱	KG51-F04	止動片軸
EA065	⊕血2.3X6黑 螺絲	KG51-F10N	撞針定位片
EA079	⊕血M3.0X15黑 螺絲	KG51-F12	扳機連桿彈片
EA106	止付螺絲3.0X4黑	KG53-F51B	撞針軸
EA113	止付螺絲 M10X10黑	KG53-F52	撞針配件
EA129	十字血頭3.0X8L五彩 自攻螺絲	KG53-F53	連發擊鐵卡榫
EA130	⊕M3.0X20五彩 螺絲(P0.5)	KG51-R05	氣嘴迫緊
EA135	十字M3.0X20染黑 螺絲(P0.5)	KG51-R07	子彈迫緊
EB002	彈簧墊圈	G010	O形環 1X8
EC014	彈簧銷	G015	O型環 S-4 NBR
ED004	E型扣環(E2.5/鍍鍍)	G016	O型環 S-4 PU
EF001	六角扳手	G019	1.5X4.5 O型環(PU90)
B003	鋼珠	G033	O型環 P-9
B006	塑膠珠	G036	O型環 2X11
KG51-U01	回位導桿	U3	擊鐵箱組件
KG51-U03	上蓋定位件	KCCF51-U5	回位導桿組件
KG51-U04	止動片軸	KCCF54-U5	槍管總組件
KG51-U10N	撞針定位片	U6	氣缸半組件
KG51-U12	扳機連桿彈片	U9	彈匣組件
KG53-F51B	撞針軸	U10	氣閥組件
KG53-F52	撞針配件	U11	氣瓶頂針組件
KG53-F53	連發擊鐵卡榫	U12	裝彈器組件
KG51-R05	氣嘴迫緊		
KG51-R07	子彈迫緊		
G010	O形環 1X8		
G015	O型環 S-4 NBR		
G016	O型環 S-4 PU		
G019	1.5X4.5 O型環(PU90)		
G033	O型環 P-9		
G036	O型環 2X11		

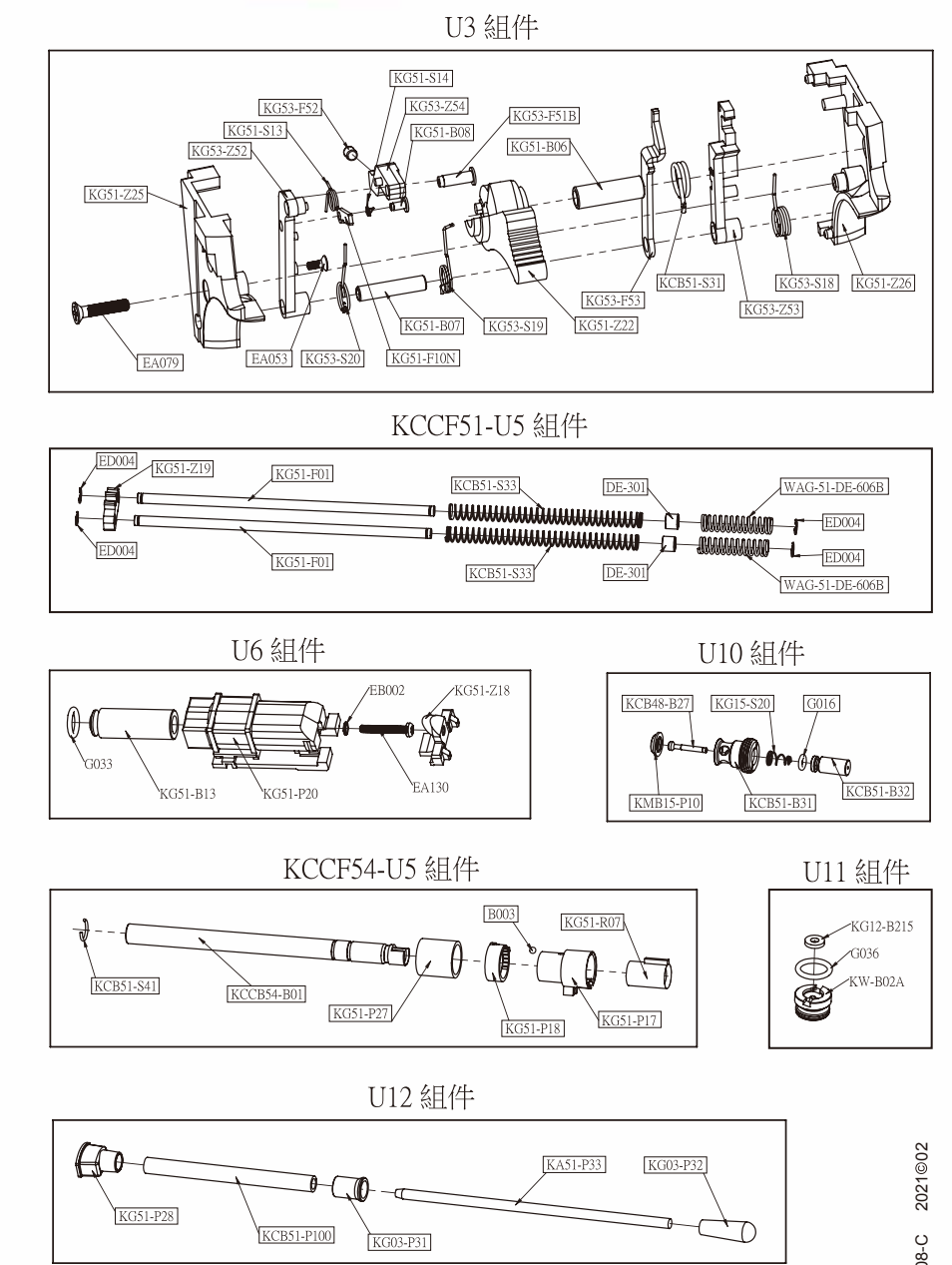
AAKCCF54 SERIES PARTS LIST

NO.	UNIT	NO.	UNIT	NO.	UNIT
KG51-P01	FRAME	KCB51-Z52	MAGAZINE BASE	KG51-E06	PIN (HAMMER)
KCMB54-P09	FRONT SIGHT	KG53-Z52	FIRING PIN FRAME	KG51-E10	PIN (FRAME)
KMB15-P10	VALVE PACKING	KG53-Z53	HAMMER CATCH	EA053	SCREW 2.0X5
KCMB54-P10	REAR SIGHT	KG53-Z54	VALVE HAMMER	EA065	SCREW 2.3X6
KCMB54-P11	TACTICAL RAIL	EA079	SCREW M3.0X15	EA079	SCREW M3.0X15
KG51-P15	MAGAZINE RIB	KA51-S03	MAGAZINE CATCH SPRING	EA106	SET SCREW 3.0X4
KG51-P17	BARREL CONNECTOR	KA51-S04	TRIGGER SPRING	EA113	SET SCREW M10X10
KG51-P18	HOP UP ADJUST RING	KA51-S05	SAFETY SPRING	EA129	SCREW M3.0X8L
KG51-P19	MAGAZINE FOLLOWER	KA51-S08	BARREL CATCH BUTTON SPRING	EA130	SCREW M3.0X20 #EA130
KG51-P20	CYLINDER	KG51-S13	FIRING PIN SPRING	EA135	SCREW M3.0X20 #EA135
KG51-P22	CYLINDER FRONT COVER (FULL AUTO)	KG51-S14	FIRING PIN LOCATOR SPRING	EB002	SPRING WASHER
KG51-P23	LOADING NOZZLE	KG53-S18	FIRING PIN SPRING	EC014	SPRING PIN
KG51-P27	FRONT BARREL CONNECTOR	KG53-S19	FULL AUTO CATCH SPRING	ED004	E-RING
KG51-P28	SPEED LOADER TUBE	KG15-S20	VALVE SPRING	EF001	WRENCH
KG03-P31	BB LOADER GROOVE	KG53-S20	FULL AUTO FIRING PIN SPRING	B003	BEARING
KG03-P32	HEAD-PRESS ROD	KCB51-S31	HAMMER SPRING	B006	PLASTIC BEARING
KA51-P33	BB JAM CLEANING ROD	KCB51-S32	MAGAZINE SPRING	KG51-F01	RECOIL BAR
KG51-P35	FLOATING VALVE	KCB51-S33	RECOIL SPRING FRONT	KG51-F03	SLIDE LOCATOR
KG53-P50	GRIP	KCB51-S41	BARREL E RING	KG51-F04	SLIDE STOPPER PIN
KCB51-P100	BB LOADER TUBE-CLEAR	KCB51-S42	LOADING NOZZLE RECOIL SPRING	KG51-F10N	FIRING PIN LOCATOR
KCB51-S43	SLIDE STOPPER SPRING	KG51-P23	SLIDE STOPPER SPRING	KG51-F12	TRIGGER BAR SPRING
KCMB54-A01	OUTER BARREL	EA106		KG53-F51B	FIRING PIN AXLE
KCMB54-A02	SLIDE	WAG-51-DE-606B	RECOIL SPRING REAR	KG53-F52	FIRING PIN ACCESSORY
		DE-301	RECOIL SPRING ACCESSORY	KG51-R05	GAS ROUTE PACKING
KCMB54-Z04	SAFETY (R)	KG51-B01	SAFETY SCREW	KG51-R07	RUBBER CHAMBER
KCMB54-Z05	SAFETY (L)	KCCB54-B01	INNER BARREL	G010	O-RING 1X8
KG51-Z05	TRIGGER	KG51-B02	TRIGGER SLEEVE	G015	O-RING S-4 NBR
KG51-Z09	BARREL LOCATOR	KW-B02A	PUNCTURE VAVLE	G016	O-RING S-4 PU
KG51-Z11	SAFETY LINK	KG51-B06	HAMMER SLEEVE	G019	O-RING 1.5X4.5
KG51-Z12	SLIDE STOPPER	KG51-B07	VALVE FIRING PIN SLEEVE	G033	O-RING P-9
KG51-Z13	MAGAZINE CATCH (L)	KG51-B08	FIRING PIN LOCATOR AXLE	G036	O-RING 2X11
KG51-Z14	MAGAZINE CATCH (R)	KG51-B13	CYLINDER SLEEVE	U3	HAMMER CASE UNIT
KG51-Z18	CYLINDER BACK COVER	KCB48-B27	VALVE	KCCF51-U5	RECOIL BAR UNIT
KG51-Z19	RECOIL SPRING PLATE	KCB51-B31	VALVE FRAME	KCCF54-U5	BARREL UNIT
KG51-Z22	HAMMER	KCB51-B32	VALVE CAP	U6	CYLINDER UNIT
KG51-Z25	CHASSIS (L)	KCB51-B33	MAGAZINE BASE PIN	U9	MAGAZINE UNIT
KG51-Z26	CHASSIS (R)	KG53-B36	GRIP NUT	U10	VALVE UNIT
KG51-Z27	BARREL CATCH	KG53-B37	MAGAZINE RIB PIN	U11	PUNCTURE VAVLE UNIT
KA51-Z28	BARREL CATCH BUTTON	KG12-B215	PUNCTURE VAVLE PACKING	U12	QUICK LOADER UNIT
KG51-Z29	SLIDE STOPPER LEVER	KG53-Z51	SAFETY LINK ACCESSORY		
KG53-Z50	TRIGGER BAR	KCMB54-E01	RIVET-ø2.5X8L		
KG53-Z51	SAFETY LINK ACCESSORY				

AAKCCF54 系列零件分解圖 AAKCCF54 SERIES EXPLORED VIEW



AAKCCF54 系列零件分解圖 AAKCCF54 SERIES EXPLORED VIEW



※零件有時為了改良而不經預告變更。
Spare parts may be modified for quality improvement
And such modification may be without advance notice.