

941



## AAKCMD43 系列說明書 AAKCMD43 INSTRUCTION MANUAL

**KWC**® KIEN WELL TOY INDUSTRIAL CO., LTD  
www.kwcgun.com

台南市仁德區義林路168巷89號

NO.89, LN. 168, YILIN RD.,

RENDE DIST., TAINAN CITY

71752, TAIWAN (R.O.C.)

TEL : +886-6-2798175

FAX : +886-6-2798176

sales@kwcgun.com

www.kwcgun.com



## 射擊/SHOOTING

### 射擊前的準備 BEFORE SHOOTING

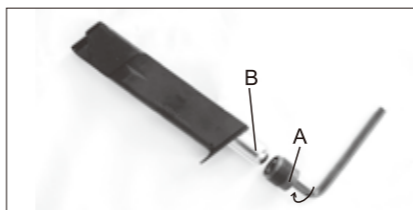


3. 使用六角扳手反時針方向取出彈匣底內件。

Use hexagonal wrench to remove the magazine cap by counter clockwise.

4. 逆時針轉出彈匣底內件後，置入小鋼瓶B，再以順時針方向鎖緊彈匣底內件A。當刺破鋼瓶出氣時，請快速鎖緊。

Turn the magazine cap a out counter-clockwise and place CO2 cartridge B inside the magazine. Rapidly turn the screw A clockwise when piercing the cartridge in the magazine.



5. 拉下滑粒。  
Pull the magazine follower down.

6. 填裝B.B彈。  
Loading BBs  
為了使擊發順暢，填裝方法是讓B.B彈在彈匣中一粒接著一粒。  
For smooth shooting, Load BBs one by one.

7. 最多可裝21粒。  
Maximum BB capacity is 21 rounds.

### 射擊 SHOOTING

1. 將裝好B.B彈的彈匣插入槍身上推入，直到彈匣卡榫發出“卡際”為止。  
Insert fully loaded magazine in the airgun until you hear the sound of “CLICK”.



2. 瞄準目標物扣引扳機，即可擊發。  
Aim the target and pull the trigger.



- ▲ 注意：在長期不使用的狀態下，請將彈匣內氣體洩放掉。  
▲ CAUTION : Release all the gas in the magazine when it will be unused for a long period of time.

### 安全裝置 SAFETY

可射擊  
SAFETY OFF



保險  
SAFETY ON



## 故障/BREAK DOWN

### 故障的原因與排除 BREAK DOWN FAQ

1. 不良的B.B彈是造成卡彈的原因，請使用品質優良的KWC B.B彈。

Bad quality BB is the main reason to cause BB jam. Please use the best quality KWC BB to avoid jamming problem.

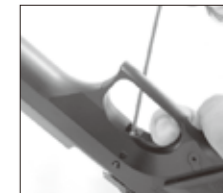
2. 當卡彈時，請儘可能先取出彈匣，再以不傷槍管的軟質細棒（不可大於4.4mm直徑）從槍口置入清除。  
When BB jammed, first please release the magazine from pistol then use a soft stick (diameter no bigger than 4.4mm) to clear up the barrel.

3. 空擊發易造成零件損耗，請避免此動作。  
Please avoid dry firing, for it could cause parts deformed or damage.

4. 當扣引扳機時，此時B.B彈即同時在上膛階段，不可扣引一半時又回復，因為如此的動作，將有可能上膛兩發B.B彈。  
Pulling trigger will load BB in the barrel. Therefore, please do not pull the trigger half way and release the trigger. This action could load 2 BBs in the pistol and cause jamming.

Therefore, please do not pull the trigger half way and release the trigger. This action could load 2 BBs in the pistol and cause jamming.

5. 使用一段時間後，請再次用中性矽油脂潤滑撞針及扳機軸心。  
Please spray the lubricant into firing pin and trigger pin.



### ⚠ WARNING

請務必嚴格遵守 使用說明指導書  
For your safety, please read this manual carefully before use.

此低動能遊戲用槍是針對喜愛射擊運動的消費者所開發。避免因使用方法不正確或改造所發生的故障或事故，請務必詳讀說明書，正確的操作享受愉快的射擊運動。

- 除了發射時外，不要將手指頭掛在板機上。
- 選擇安全與適當標靶
- 在非使用期間，請保持保險關閉且退彈的狀態，就算在非使用狀態，也要如同其已裝彈。
- 如任何的機械產品，槍的保險也可能失效。即使在保險關閉的狀態下也請小心的操作此槍，請勿將槍口對人。
- 千萬不要對堅硬或平坦表面、水面射擊，以避免跳彈。
- 請妥善保管產品在未未成年孩童無法伸手取得的場所。
- 每次使用前後都應該檢查擋彈物，假如擋彈物表面有磨損失效或是反彈時請停止使用。
- 請使用高品質BB彈，請勿使用①口徑大於4.4mm ②表面不平滑的③重複使用過的BB彈④非本說明書指名的發射物。
- 最高的使用及儲藏CO2小鋼瓶環境為50°C(122°F)以內，高溫可能會造成CO2小鋼瓶過熱甚至爆炸。
- 檢查任何掉落之槍枝，以確保未影響其功能。

**This airgun is intended for recreational or training purposes. To prevent improper handling, modification or alteration causing malfunction or accident, please read the owner's manual carefully. Enjoy the pleasant shooting experience by proper operation.**

- Do not put your finger on the trigger except shooting.
- Please choose safe and proper target.
- Please always keep the airgun on safe and unloaded when not using.
- Like all mechanical devices, an airgun safety can fail. Always handle the airgun safely even when the safety is “on safe”. Never point the airgun at any people.
- Avoid ricochet. Never shoot at a hard or flat surface or at water.
- Keep the airgun out of reach for small children.
- Your backstop should be inspected for wear before and after each use. Discontinue use of the backstop if surface shows signs of failure or ricochet.
- Only use high quality 4.5mm steel BBs. Never use ①BB diameter larger than 4.4 mm ②BB with unsmoothed surface ③reused BB that has been fired ④incorrect projectiles not design for this airgun
- Do not expose CO2 cartridges to heat or store them at temperatures above 50°C(122°F). CO2 cartridges may over heat or explode at temperatures above 50°C(122°F).
- Check any gun that has been dropped to ensure that its function has not been affected.

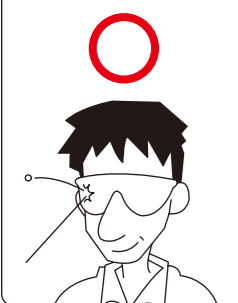


# ! WARNING 警告

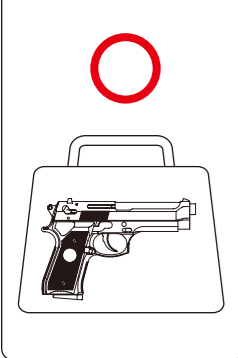
# AAKCMD43 系列零件表 AAKCMD43 SERIES PARTS LIST

# AAKCMD43 系列零件分解圖 AAKCMD43 SERIES EXPLODED VIEW

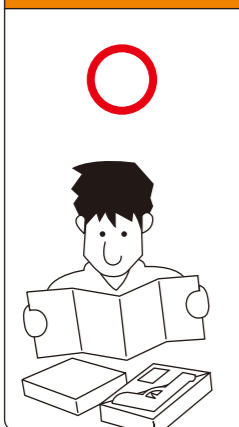
★使用低動能遊戲用槍前，請務必戴上保護眼鏡或面罩。  
★Always wear eye protection when using airsoft.



★不可攜帶低動能遊戲用槍在公共場所行走，請務必裝在袋子或盒子內。  
★Always transport an airsoft in a locked carrying case. Make sure it is unloaded and on safe.



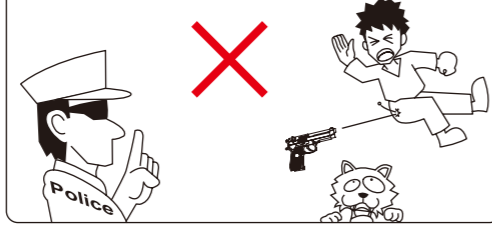
★使用低動能遊戲用槍前，請務必詳讀說明書內容。  
★Read the owner's manual before using the airsoft.



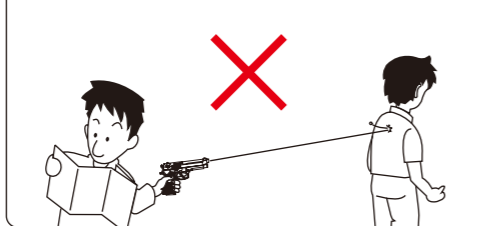
★請不要由槍口向內探視。  
★To Avoid accidental discharge, do not look directly into the barrel.



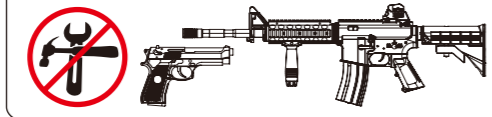
★請不要在公開場合使用低動能遊戲用槍，也請不要拿低動能遊戲用槍對準人或動物。  
★Never brandish or aiming this airsoft at any people or domestic animals. Brandish this airsoft in public is dangerous and may be a crime.



★請確認後再發射BB彈方向，附近無人或動物存在。  
★Always be aware of your surrounding before and during shooting and select a safe area for target practice.



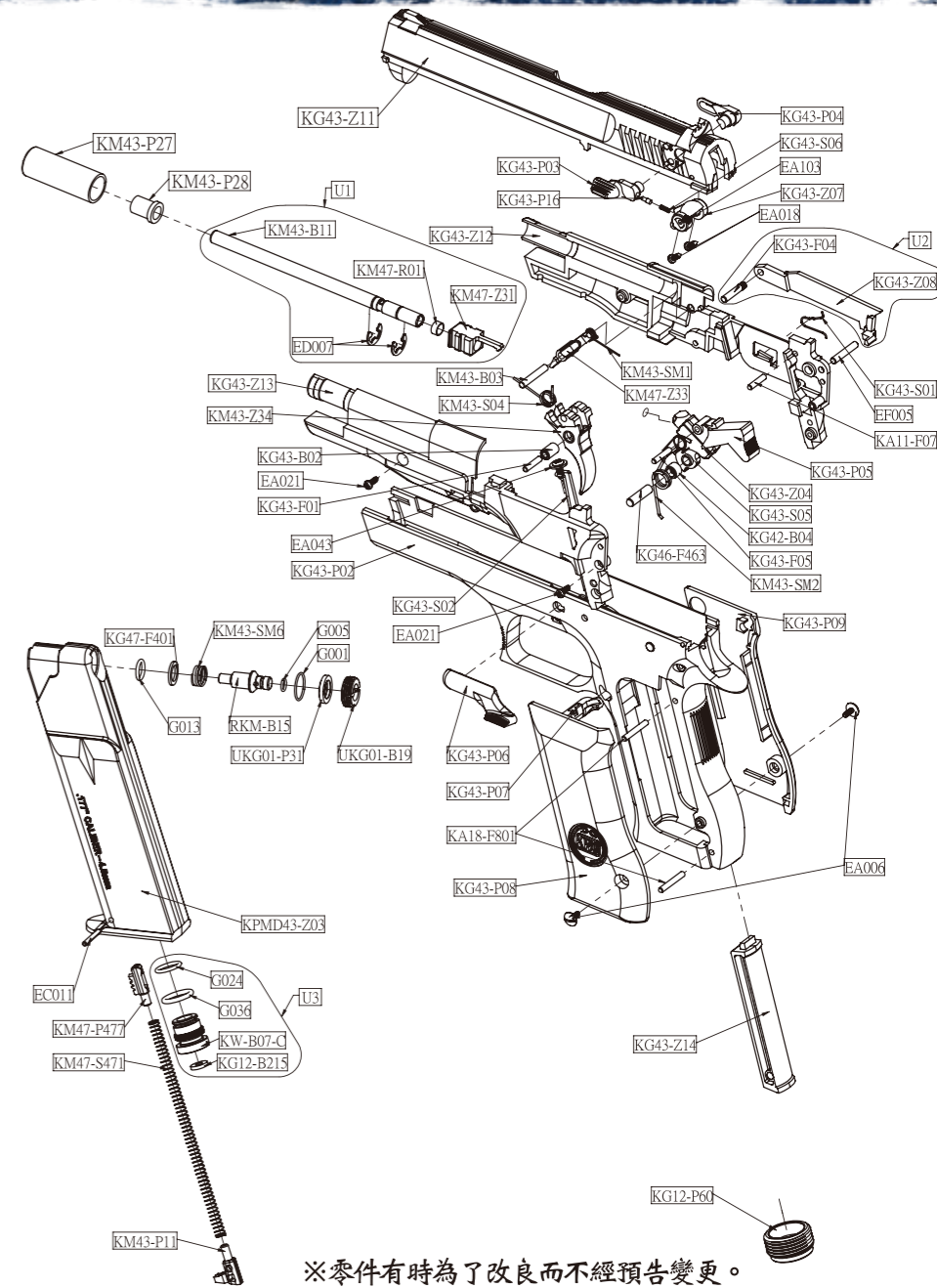
★不可任意改造或加工低動能遊戲用槍，私自改造加工會造成產品損壞、保固失效，導致使用上不安全，甚至觸法送辦。  
★Disassemble, modify, or alter of your airsoft may cause malfunction, void your warranty and may make it unsafe to use.



Do not display this pistol in public—it may confuse people and may be a crime. 請不要忘了，雖然自己知道這只是玩具，但不知道的人，會以為這是真槍。

圖號	零件名稱	UNIT
KG43-P02	本體	FRAME
KG43-P03	保險(左)	SAFETY(L)
KG43-P04	保險(右)	SAFETY(R)
KG43-P05	擊鐵	HAMMER
KG43-P06	上蓋止動片	SLIDE STOPPER
KG43-P07	彈匣卡榫	MAGAZINE CATCH
KG43-P08	槍柄(左)	GRIP (L)
KG43-P09	槍柄(右)	GRIP (R)
KM43-P11	底座定位件	MAGAZINE BASE LOCATOR
KG43-P16	保險定位軸	SAFETY FLOCATOR PIN
KM43-P27	KM46-槍管套	OUTER BARREL CAP
KM43-P28	內槍管導引件	INNER BARREL GUIDE
UKG01-P31	心棒蓋迫緊	VALVE PACKING
KG12-P60	彈匣底內件	MAGAZINE BOTTOM CAP
KM47-P477	彈匣滑粒	MAGAZINE FOLLOWER
KPMD43-Z03	彈匣本體 4.5	MAGAZINE FRAME
KG43-Z04	撞針	FIRING PIN
KG43-Z07	保險連桿	SAFETY LINK
KG43-Z08	鈹機連桿	TRIGGER BAR
KG43-Z11	上蓋	SLIDE
KG43-Z12	擊鐵箱(右)	CHASSIS (R)
KG43-Z13	擊鐵箱(左)	CHASSIS (L)
KG43-Z14	握柄配件	GRIP PLUG
KM47-Z31	槍管連動件	BARREL TOW
KM47-Z33	鈹機連動件	TRIGGER CONNECTOR
KM43-Z34	鈹機	TRIGGER
KM47-R01	子彈迫緊HOP-UP	RUBBER CHAMBER
KG43-B02	鈹機軸套	TRIGGER SLEEVE
KM43-B03	鈹機連動件軸#1	TRIGGER CONNECTOR PIN#1
KG42-B04	撞針軸套	FIRING PIN SLEEVE
KM43-B11	槍管 HOP-UP用	BARREL
KW-B07	氣瓶頂針M14	PUNCTURE VAVLE
KW-B15	RKM系心棒(兩孔)	VALVE
UKG01-B19	心棒蓋	VALVE CAP
KG12-B215	氣瓶頂針迫緊	PUNCTURE VAVLE PACKING

圖號	零件名稱	UNIT
KG43-F01	軸(鈹機用)	PIN (TRIGGER)
KG43-F04	軸(鈹機連桿用)	PIN (TRIGGER BAR)
KG43-F05	軸(擊鐵用)	PIN (HAMMER)
KA11-F07	KA-11 軸B(擊鐵箱)	PIN (CHASSIS)
KG47-F401	心棒壓簧墊圈	VALVE SPRING GASKET
KG46-F463	撞針軸	FIRING PIN AXLE
KA18-F801	軸(彈匣用)	PIN (MAGAEINE)
EF005	鈹機連動件軸#2	TRIGGER CONNECTOR PIN#2
KG43-S01	鈹機連桿扭簧	TRIGGER BAR SPRING
KG43-S02	彈匣卡榫扭簧	MAGAZINE CATCH SPRING
KM43-S04	鈹機扭簧	TRIGGER SPRING
KG43-S05	擊鐵扭簧	HAMMER SPRING
KG43-S06	保險定位軸壓簧	SAFETY LOCATOR PIN SPRING
KM47-S471	彈匣壓簧	MAGAZINE SPRING
KM43-SM1	鈹機連動件扭簧	TRIGGER CONNECTOR SPRING
KM43-SM2	撞針扭簧	FIRING PIN SPRING
KM43-SM6	心棒壓簧	VALVE SPRING
ED007	E型扣環	E-RING
EA006	一字特殊3.0X6束黑	SCREW 3.0X6
EA018	⊕ 2.3X6 尖黑熱螺絲	SCREW 2.3X6
EA021	⊕ 2.3X6 束黑熱螺絲	SCREW 2.3X6
EA043	⊕ 3X8 尖鋸螺絲	SCREW 3X8
EA103	止付螺絲3X3	SET SCREW 3X3
EC011	彈簧銷(底座定位件用)	SPRING PIN
G005	O型環 1X4	O-RING 1X4
G001	O型環 0.8X11.3id	O-RING 0.8X11.3id
G013	O形環 1.45X6.9id	O-RING 1.45X6.9id
G024	O形環 S-10	O-RING S-10
G036	O形環 2X11	O-RING 2X11
U1	內槍管組件	INNER BARREL UNIT
U2	鈹機連桿組件	TRIGGER BAR UNIT
U3	氣瓶頂針組件	PUNCTURE VAVLE UNIT



※零件有時為了改良而不經預告變更。  
Spare parts may be modified for quality improvement  
And such modification may be without advance notice.