



Introductory Product Guide

MAPLE LEAF

WINTER 2022 | PUBLICATION DEVELOPED BY JIA DYI CO. LTD.





Table of Contents

PAGE 2 HOP UP RUBBER

PAGE 3 HOP UP SILICONE

PAGE 4 INTERNAL BARRELS

PAGE 5 CRAZY JET SYSTEM

PAGE 6/7 .. INTERNAL UPGRADES

PAGE 8 VRS UPGRADES

PAGE 9 SILENCERS & SUPPRESSORS

PAGE 10 ... NEWEST RELEASE

HOP UP *RUBBER*

THE ORIGINAL,
DURABLE MATERIAL,
FOR PROVEN RESULTS.



SUPER

NARROW ENTRANCE FOR
CONSISTENT POWER OUTPUT.



MR. HOP

SHEILD-SHAPE GROOVE
PROMOTES SUPERIOR JUMP
EFFECT.



DIAMOND

THE INTERNAL DIAMOND SHAPE
BOOSTS HOP UP EFFECT.



HOT SHOT

SPECIAL PRESSURE POINT
INCREASES PREDICTABLE
TRAJECTORY.



MACARON

ENHANCED AIR SEAL FOR
BETTER ACCURACY.



SUPER MACARON

UNIQUE INTERNAL SHAPE
ENHANCES SPIN.



AUTOBOT

PRESSURE SEAL REDUCES
POWER LOSS AND STABILIZES
TRAJECTORY.



DECEPTICON

IMPROVED LONG RANGE
PERFORMANCE.

HOP UP *SILICONE*



SUPER

DESIGNED FOR OPTIMAL AND
STABLE PERFORMANCE.



SUPER MACARON

PROVIDES A SUPERIOR AIR SEAL.



DECEPTICON

MAXIMIZES SHOT ACCURACY.



COOL SHOT

PERFORMS WELL IN COLD
WEATHER.



AUTOBOT

MAXIMIZES SHOT RANGE.



MR. HOP

CONSISTENCY IN ANY
CONDITIONS.

INNER BARRELS



**CRAZY JET
GBB**



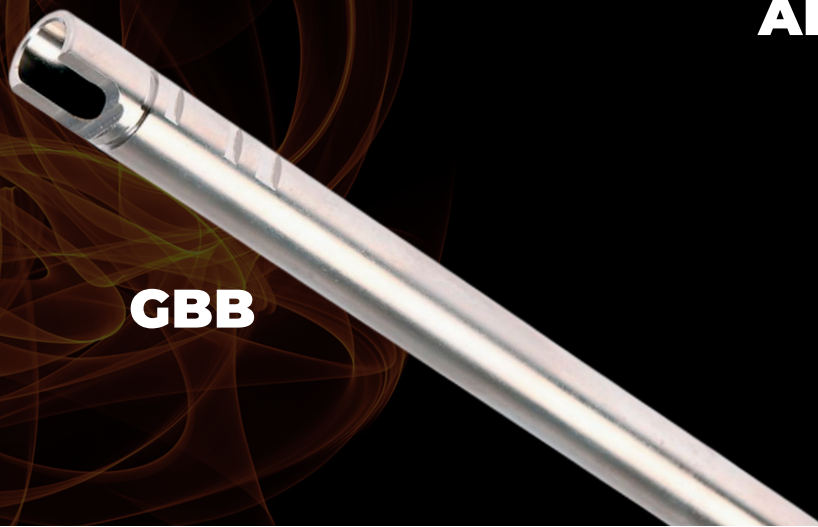
**CRAZY JET
MARUI**



**CRAZY JET
HYBRID**



AEG



GBB

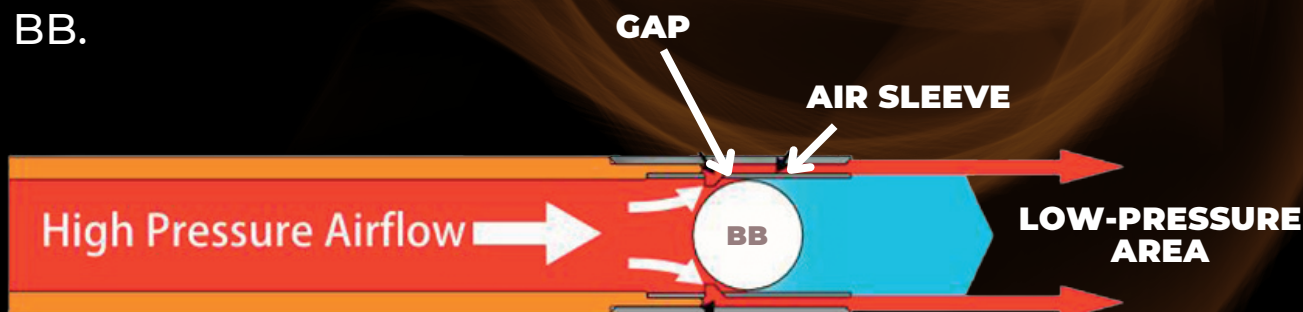
WHAT IS THE CRAZY JET INNER BARREL?



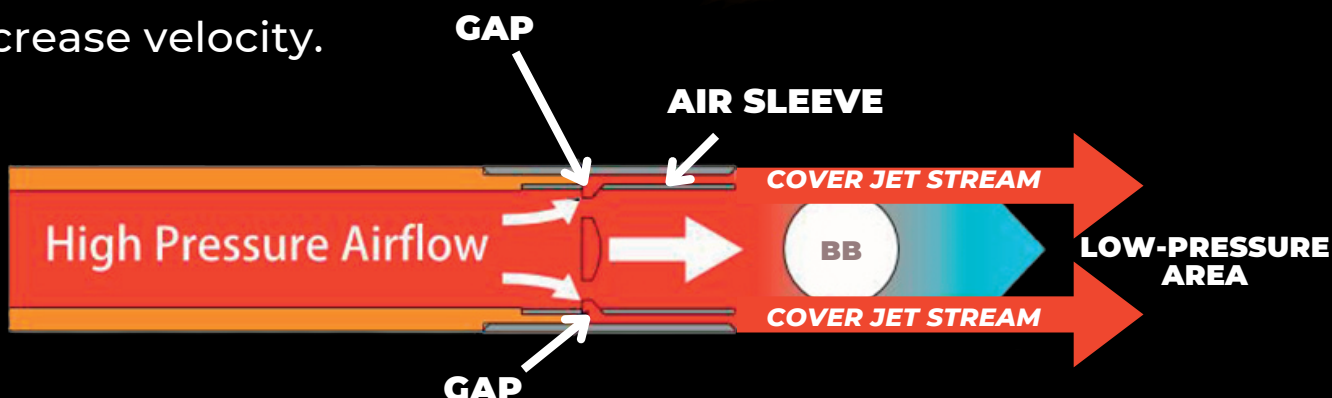
After firing, the BB moves forward from high-pressure airflow.



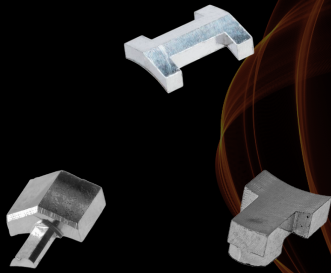
When the BB is in the air sleeve, the high-pressure airflow will come out from the gap first because the airflow is lighter than the BB.



We use the air in front of the BB to create the "cover jet stream", or CJS, just like an invisible barrel to decrease the air resistance. The CJS can help to pull the BB forward and will not decrease velocity.



INTERNAL *UPGRADES*



F, I, & T KEYS



**TORNADO VALVE FOR
MARUI \ WE \ HI-CAPA \ M1911 \ GLOCK**



**TORNADO VALVE FOR
WE GBB M4**



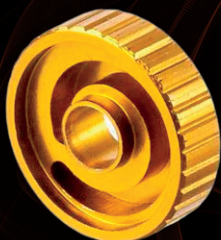
**HIGH PERFORMANCE VALVE
FOR MARUI \ WE \ KJ \ VFC STARK**



**OUTER BARREL FOR
MARUI FN-57**



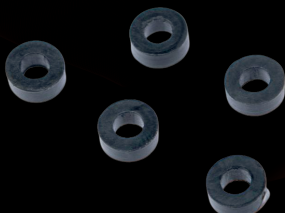
**STEEL REINFORCED TRIGGER RODS
FOR MARUI XDM**



**HOP ADJUSTMENT WHEEL
FOR WE / MARUI / VFC / KJ**



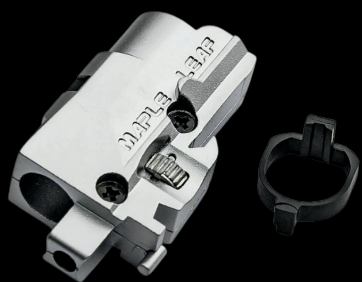
**HOP ADJUSTMENT WHEEL FOR
M1911 / MEU / HI-CAPA / P226**



INLET VALVE O-RINGS



INLET VALVE SPRINGS



**HOP UP CHAMBER SET FOR VFC
GLOCK G17.5 \ G19.4 \ G19X \ G45**



**HOP UP CHAMBER SET
FOR GHK GLOCK 17**



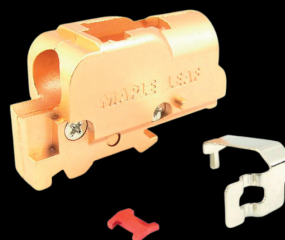
**HOP UP CHAMBER SET FOR
Y&P MK23 \ MARUI MK23**



**CHAMBER SET FOR
MARUI / WE / KJ / HI-CAPA**



**CHAMBER SET FOR
MARUI / WE / KJ / M1911**



**CHAMBER SET FOR
MARUI / WE / KJ / VFC GLOCK**



**HOP UP LEVER SET
FOR VFC HK45**



**ADJUSTMENT LEVER FOR
GLOCK / M1911 / HI-CAPA**

VSR UPGRADES



INNER BARRELS



OUTER BARRELS



TRIGGER SETS



ADJUSTMENT LEVERS



FOLDING STOCKS



BOLT HANDLES



**CYLINDERS
& PISTONS**

AND MORE!

SILENCERS & *SUPPRESSORS*

SILENCER ADAPTER HEAD



DUMMY SILENCER / SUPPRESSOR



SPACERS, ADAPTORS, & END CAPS



THE HUMMINGBIRD SHORT-STROKE BOLT ASSEMBLY

NEWEST RELEASE

**DROP-IN REPLACEMENT TO INCREASE RATE OF FIRE
TO 18 ROUNDS PER SECOND**

FOR GHK AR / M4 GBB SERIES



FOR VFC AR / M4 GBB SERIES

